

Maintenance Recommendations for Resilient Flooring

ColourArt® Medintone™ Homogeneous Sheet Flooring with Diamond 10® Technology Coating

Following are guidelines for maintaining Armstrong Flooring's ColourArt Medintone Homogeneous Sheet Flooring with Diamond 10 Technology coating. They are based on general experience using established methods and cleaning materials. It is important that these guidelines are read carefully.

Ultimately, local site conditions will determine what specific maintenance procedures and frequencies are needed. It is the responsibility of the maintenance provider to establish the maintenance program(s) that meet the demands of the space(s) and needs of the facility.

All resilient floor coverings require maintenance. How frequently the floors must be maintained depends largely on the factors described below. Following regular and well-planned maintenance programs protects the floor by reducing wear, preserves the floor's attractive appearance and ultimately increases its service life.

- **How to Determine/Tailor A Maintenance Program**

Before establishing a maintenance program, there are a number of factors which must be considered in order to determine the most appropriate, cost-effective methods to use. It is critical that the maintenance methods for each floor and area be chosen only after careful evaluation and regard to the following:

- **End User's Expectations**
What is considered an acceptable level of appearance by the owner, customers, staff or end user?
What is the desired gloss (high or low gloss)?
- **Type of Facility & Location of Flooring**
Entryways, lobbies, classrooms, checkout lines and pivot-point areas may require more frequent cleaning than lower traffic areas in other parts or upper levels of the building.
- **Volume and Type of Traffic and Soil**
Traffic types and volumes in entryways and corridors will vary greatly from those found in classrooms and checkout lines. Dirt and grit carried in from the outside can differ significantly from the soils and chemical spills found in a laboratory or emergency room.
- **Colour/Design of Flooring** Colour and pattern can have a significant impact on a floor's appearance and, when properly chosen, may help mask soiling and staining. Mid-tones are better choices than light or dark colours. Busier/high contrast patterns will hide better than solid/monolithic ones.
- **Resources/Equipment/Chemicals/Personnel/Budget** Are well-trained maintenance personnel available?
Are the appropriate pieces of equipment (scrubbers, buffers, mops, pads, etc.) available?
Are the appropriate chemicals available?
What is the budget?
- **Special Traffic/Footwear**
Areas subjected to frequent rolling loads provide a different environment than a children's play area or corridor in an elementary school.

Maintenance Recommendations for Resilient Flooring

Preventive Care and Maintenance

Controlling grit and soil is crucial to prolonging the attractive appearance of any floor. Grit or soil is any material—including dirt, stones, sand and clay—that is deposited onto the floor by normal commercial traffic. The best way to control grit is by using appropriate and well-maintained walk-off mats. Studies over the years have shown that properly installed and properly maintained entrance matting systems significantly reduce the amount of soil and water tracked into the building. Less soil means reduced wear, longer appearance retention, increased service life and reduced maintenance costs.

Recommended walk-off mats should:

- Have a high-friction, open surface design to knock grit particles from the bottoms of shoes and then trap the particles.
- Be used at every entrance, inside and outside, should be at least as wide as the doorway and 8' to 12' long.
- Have a backing that won't stain the floor.
- Be cleaned regularly, vacuumed, shaken and/or hosed off frequently.

While walk-off mats will retain a substantial amount of this grit and soil, some will still find its way into the building. Regular vacuuming, sweeping and dust-mopping will help to further control this type of grit.

Furniture Rests (feet, glides, casters, etc.)

Proper selection and care of furniture rests is important in the maintenance and appearance retention of all types of floor coverings. Following are some guidelines to consider:

- The contact area should be large enough to distribute the load evenly without damaging the floor.
- The contact area should be smooth and flat to provide full contact and free of small protrusions, irregularities, roughness, depressions, mold lines, embedded dirt, and grit, etc.
- All edges should be slightly rounded to prevent damage if briefly turned on edge.
- Rests should be manufactured from non-staining materials.
- Rests should be properly maintained. Worn, damaged and missing furniture rests should be replaced.

Furniture, appliances, equipment, etc., should be properly leveled so that all rests are fully and firmly on the floor at all times.

Other Maintenance Tips for Best Results

- Newly installed flooring should not be exposed to rolling load traffic for at least 72 hours after installation to allow setting and drying of the adhesive.
- If it becomes necessary to move any heavy fixtures or appliances over the flooring on casters or dollies, the flooring should be protected with 6.0mm or thicker plywood, hardboard or other underlayment panels. Where other on-site work is continuing, Armstrong Flooring recommend the use of a protective covering such as plain, undyed Kraft paper to guard against damage to the new floor.
- On heat welded seams, apply a thin, even application of a commercially available, high-quality multi-purpose top coating such as Armstrong Flooring S-762 Weld Rod Coating Pen (it may be necessary to periodically recoat the welded seam).
- Do not wet wash, machine scrub, or strip the floor for at least five days after installation. This is to prevent excess moisture from interfering with the adhesive bond and/or seam treatments.
- When performing wet maintenance, always use proper signage and prohibit traffic until the floor is completely dry.
- Do not use excessive amounts of liquid during maintenance (DO NOT flood the floor).
- Do not use brown or black pads, equivalent brushes or stiff-bristled, highly abrasive brushes on any Armstrong resilient flooring.

Maintenance Recommendations for Resilient Flooring

Maintenance Recommendations for ColourArt™ Medintone™ Homogeneous Sheet Flooring with Diamond 10™ Technology Coating

Armstrong Flooring’s ColourArt™ Medintone™ Homogeneous Sheet Flooring with Diamond 10™ Technology coating is manufactured with a high performance, hydrophobic, urethane finish that provides outstanding scratch and scuff resistance, improved maintenance characteristics and maintenance options for the end-user.

Low Maintenance: No Polish – No Buff

Initial Care:

After installation is completed:

1. Remove all debris (electrostatic mop or vacuum).
2. Damp mop using Armstrong Flooring **Once 'n' Done** Floor Cleaner* (*or a pH 6.0-8.0 neutral cleaner).

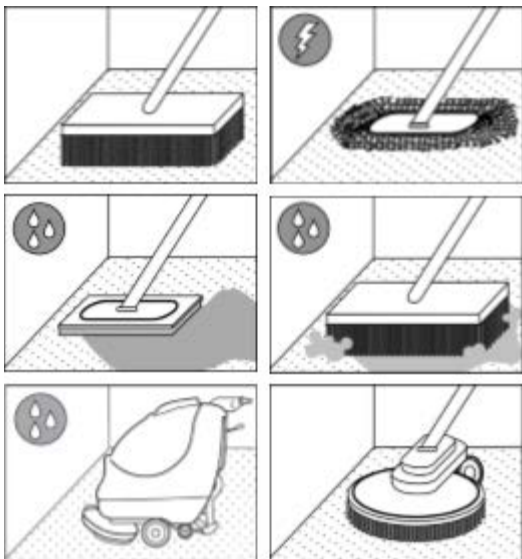
Allow 48 hours before carrying out the following:

1. Mop using electrostatic dust mop or vacuum
2. Damp mop or light scrub if necessary. Wet scrub using automatic scrubbing machine or single disc polisher ≤600RPM and Armstrong Flooring **Once 'n' Done** Floor Cleaner*.

Dilute chemicals to appropriate levels for each application as per instructions on container.

Routine care:

Daily: Sweep, vacuum, static mop. Regularly damp mop, wet scrub and burnish; use Once 'n' Done Floor Cleaner (or a pH 7.0-8.5 neutral cleaner). Frequency and type of maintenance required depends on traffic flow, application, environmental conditions and customer requirements. **Light and accent colours** can require more maintenance, where practical choose darker, more camouflaging colours.



Daily:

- Sweep, static dust/microfibre mop, vacuum thoroughly to remove all dirt and dust.

Daily / Regular:

- Damp Mop (Nylon/Rayon/Microfibre)

Regular:

Large & unobstructed areas,

- Wet Scrub using automatic scrubbing machine or single disc polisher ≤600RPM (use medium nylon brush, red or blue pad) and **Once 'n' Done** Floor Cleaner*.

Confined & obstructed areas

- Spot scrub edges & fixtures using soft bristled broom and **Once 'n' Done** Floor Cleaner*.

Protection:

Use walk-off mats that are as wide as the doorway entrances and long enough (min. 3 average paces) to trap dirt before reaching the resilient floor. Ensure that walk-off mats are cleaned frequently.

Sand and grit are abrasive and can damage floors; stopping dirt at the entrance means less dirt trafficked through the

Maintenance Recommendations for Resilient Flooring

building, protecting your investment and helping keep maintenance costs down.

Ensure all furniture legs have well maintained non-abrasive feet. Exposed metal legs can damage flooring.

Rubber products such as chair feet, tyres & mats can stain flooring, do not leave these in contact with flooring.

Stain Removal:

Treatment should be carried out when stains are fresh, immediately remove contaminant. Spot clean with a neutral floor cleaner using soft nylon brush. After stains have been removed, rinse floor with clean water and allow to dry.

Warnings & General Hints

1. DO NOT: Polish/Wax, Dry burnish, Spray buff or Scrub using a high speed polisher/scrubber with abrasive pads/brushes
2. DO NOT USE: Highly acidic, alkali, caustic or solvent agents such as hydrochloric/sulfamic acid, toilet bowl cleaner, paint stripper, benzene, toluol, acetone or strong scouring powders, as these will damage the floor.
3. All vinyl flooring should be protected during the construction period. Armstrong Flooring does not recommend covering our PVC floor or wall products with plastic materials (such as builders plastic, corflute, carpet protector film etc).
4. Adhesive residue may be removed using a clean white cloth dampened with small amounts of mineral turps, carefully following warnings on container, immediately rinse with clean water (test in inconspicuous area first)
5. Auto scrubbing in unobstructed areas takes approximately 20% of the time of damp mopping. For maximum efficiency use damp mopping in obstructed areas only.
6. Spot mopping / spot scrubbing should be used when necessary. **Spillages** – post wet floor signs and wipe up immediately. Allow to dry and remove signs.

For further Armstrong Flooring information:

Australia Freecall 1800 632 624

Email Customer_services@armstrongflooring.com or contact us on the web

www.armstrongflooring.com.au

August, 2019