

# Armstrong Flooring™

## S-763 Seam Adhesive

S-763 Seam Adhesive helps significantly reduce installation time compared to traditional seaming methods and allows for a broader range of installer skill sets. It is an alternative to heat welding in commercial installations of vinyl sheet flooring where an impervious floor covering is not required.

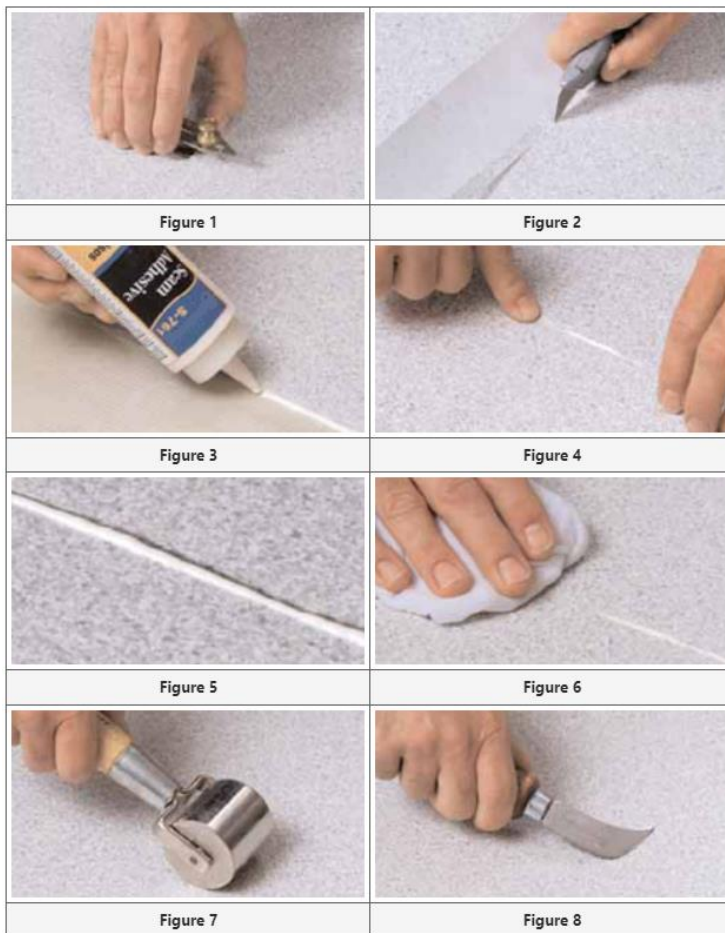
**NOTE: S-763 Seam Adhesive is not recommended in health care operating rooms, procedural rooms, or any space where an aseptic environment is necessary. Heat-welded seams are recommended for those types of applications.**

Type	Water-based/resin
Color	White
Taggants	Saturn Yellow
Applicator	Bottle
Coverage	1/8 in. bead, approximately 144 lin. ft./bottle (43 lin. m.)
Units	8 oz. (236 mL) bottle; 6 or 12/ctn.
Open Time	None recommended
Working Time	15 minutes
Dry Time	User can walk on seam after two hours. 4-6 hours is full dry time
Shelf Life	1 year, unopened
Freeze/Thaw Stable	No, keep from freezing
VOC Content	45 g/L; calculated and reported, SCAQMD 1168
Advantages	<ul style="list-style-type: none"><li>▪ Strong bond for flooring seams.</li><li>▪ Conceals the seam.</li><li>▪ Easy installation, easy clean up.</li></ul>



## Adhesive Procedure:

1. Use a recess scribing tool to recess scribe all seams net (Fig.1).
2. Insert a piece of scrap material beneath the scribe mark. With the scrap on the same side as the cutting hand, cut the seam at a 90-degree angle. Be sure to hold the knife blade straight up and down (Fig. 2).
3. Remove the scrap piece of material.
4. Using the applicator bottle, apply a 1/8 in. bead of S-761 Seam Adhesive along the seam edge (Fig. 3).
5. Tuck the seam edge into place, forcing the S-761 Seam Adhesive up through the seam (Fig. 4).
6. Clean adhesive residue from the surface of the flooring using a clean, white cloth dampened with neutral detergent and water (Fig. 6).
7. Roll the seam using a hand roller (Fig. 7).
8. Remove burr at the seam by carefully skiving with the back of the linoleum knife (Fig. 8).
9. Roll immediately in both directions with a 100-lb. roller.



NOTE: AHF Products/matrix manufacturer is not responsible for the misuse of this product. This Technical Data Sheet and the information conveyed herein supersede all previous versions. Revised 4/2024