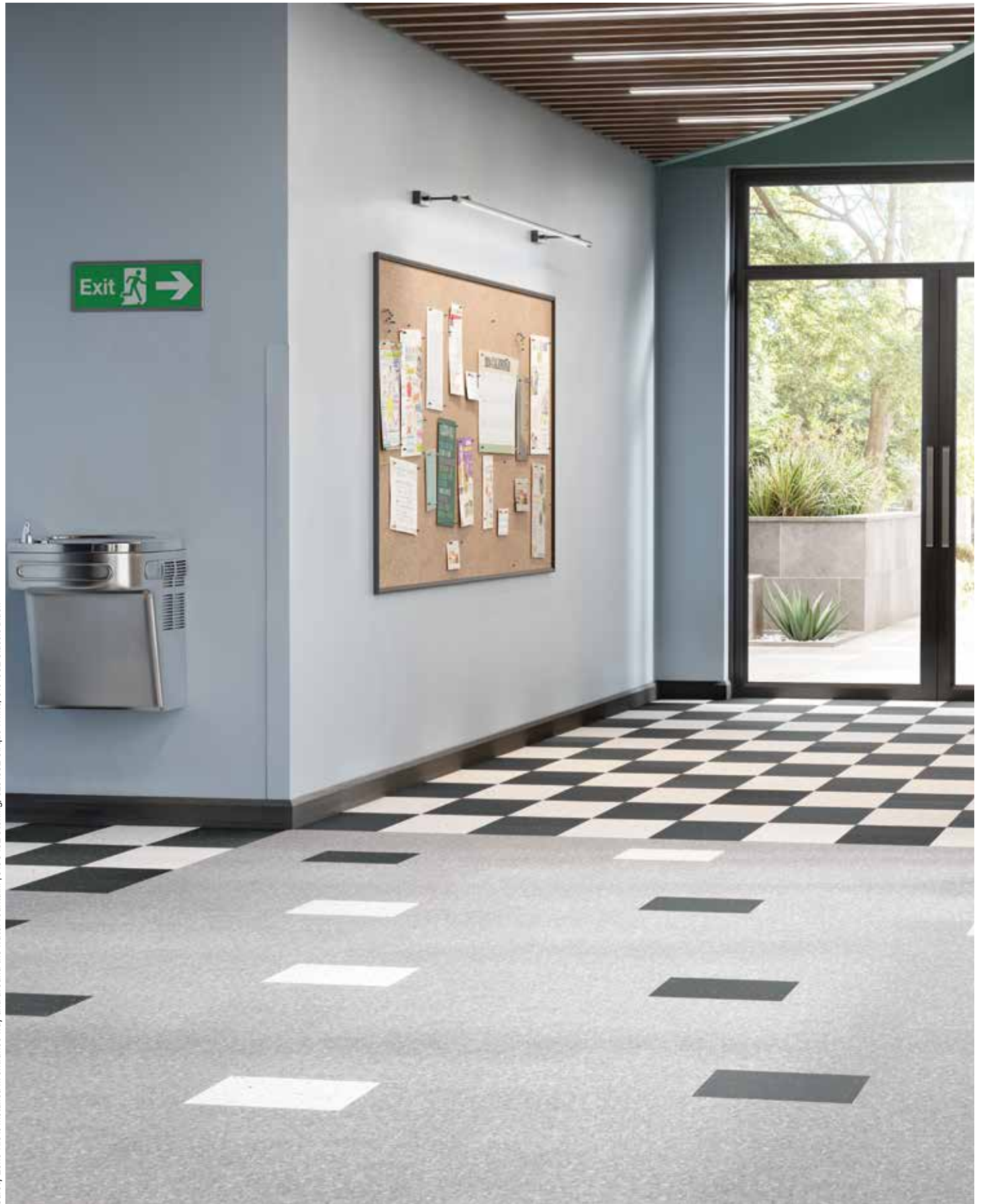


Safety Zone Tile is installed in entrance way and around the water fountain. | 51904SZ Sterling, 5253SZ Cirque White, 51910SZ Classic Black



Safety ZoneTM
Slip-Retardant Tile



Safety Zone Tile is installed in front of the salad bar. | 51861SZ Soft Warm Gray, 51915SZ Charcoal, 51903SZ Blue/Gray

Enhanced Traction Meets Seamless Design

VCT is known for its design flexibility and now adding safety does not mean sacrificing aesthetics, Safety Zone™ Tile allows for a seamless transition from Imperial® Texture to slip-retardant tile. No obvious color change that disrupts the flow of the space.

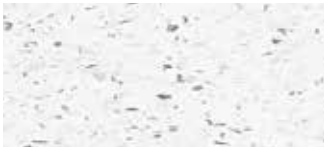


How It Works

Safety Zone™ Tile is made with an embossed surface embedded with proprietary particles for exceptional slip-retardant performance. No specialized maintenance required; follow traditional VCT maintenance protocols including the application of polish and periodic restorative maintenance.

- Features through-pattern wear layer for lasting performance, even under heavy traffic conditions*. As the tiles wears, the pattern is consistent.
 - Exclusive FastStart® Factory Finish makes initial maintenance quick and easy, no stripping or waxing required before applying initial polish and the sheen helps eliminate upside down installs.
 - Made in USA means product is available when you need it with no delays.
 - Sustainability
 - Made with up to 85% North American limestone locally quarried - an abundant resource
 - Low VOC emissions and FloorScore® certified
 - Third-party certified EPD, HPD available
 - Size and squareness are consistent, edges are clean and shade is controlled which means fewer call backs.
- * Refer to the installation instructions and maintenance guide for proper installation, maintenance and care information.





51911SZ Classic White



51899SZ Cool White



52513SZ Cirque White



51941SZ Polar White



51933SZ Blue Cloud



51860SZ Soft Cool Gray



59234SZ Silk



51908SZ Pewter



51839SZ Fortress White



51836SZ Shelter White



51810SZ Washed Linen



51830SZ Cottage Tan



51858SZ Sandrift White



51804SZ Earthstone Greige



51927SZ Field Gray



51861SZ Soft Warm Gray



51903SZ Blue/Gray



51904SZ Sterling



51915SZ Charcoal



51910SZ Classic Black



57001 Shale Gray



57008 Soft Cedar



57004 Slate Black

**10-Year Commercial
Limited Warranty**

Add 10 years of overall warranty coverage by using Strong System™ subfloor preparation products. Visit ArmstrongFlooring.com for more information.



1. Exclusive
Fast Start®
Factory Finish

2. Through-
Color/Pattern
Wear Layer

Product Information

Construction - Vinyl Composition Tile

International Specifications - ASTM F1066,
Class 2 Through Pattern

Overall Thickness - 1/8 in. (3.2 mm)

Wear Layer Thickness - 1/8 in. (3.2 mm)

Size - 12 in. x 12 in. (305 mm x 305 mm)

Factory Finish - Fast Start®

Installation - Adhesives: S-515, S-525

Maintenance Options - Polish

Shade may vary from sample.

ArmstrongFlooring®

Walk On. Walk Strong.™



Visit ArmstrongFlooring.com

for complete Product, Technical,
Adhesives, Installation and
Maintenance recommendations.



Print# AF-10250-525

All trademarks are owned by AHF, LLC, or its subsidiaries or affiliates. | ©2025 AHF, LLC.
FloorScore® is a registered trademark of the Resilient Floor Covering Institute.



MADE IN
USA