



ST621 Mixer 2 Pink Lady, ST934 Spettro Abilene



Duo™
Luxury Flooring



Design for Happiness

Elevate the everyday with the perfect pairing of easy neutrals and a rainbow of color designed to bring joy and positivity into a space.

Duo includes two coordinating visuals to provide a playful palette that makes it easy to incorporate branding, school colors, and wayfinding elements.



ST931 Spetto, Caspian Sand, ST511 Mixer 2, Champagne, ST516 Mixer 2, Pineapple Juice, ST523 Mixer 2, Blue Hawaiian, ST524 Mixer 2, Blue Lagoon, ST529 Mixer 2, Zinfandel

Embrace a spectrum of color with **Mixer 2**. Available in 6 in. x 36 in. planks, Mixer 2 offers 16 saturated colorways with a soft background texture to create a tie-dye inspired look.



ST510 Mixer 2, Piña Colada



ST511 Mixer 2, Champagne



ST514 Mixer 2, Club Soda



ST515 Mixer 2, On the Rocks



ST516 Mixer 2, Pineapple Juice



ST526 Mixer 2, Appletini



ST525 Mixer 2, Mint Julep



ST524 Mixer 2, Blue Lagoon



ST517 Mixer 2, Orange Soda



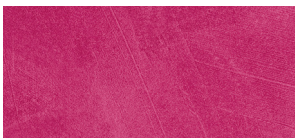
ST518 Mixer 2, Tropical Sunrise



ST519 Mixer 2, Fruit Punch



ST528 Mixer 2, Bordeaux



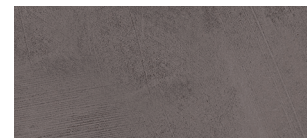
ST621 Mixer 2, Pink Lady



ST523 Mixer 2, Blue Hawaiian



ST529 Mixer 2, Zinfandel



ST513 Mixer 2, Root Beer Float



ST527 Mixer 2, Black Tea



ST391 Spettro, Caspian Sand, ST510 Mixer 2, Piña Colada, ST511 Mixer 2, Champagne, ST516 Mixer 2, Pineapple Juice

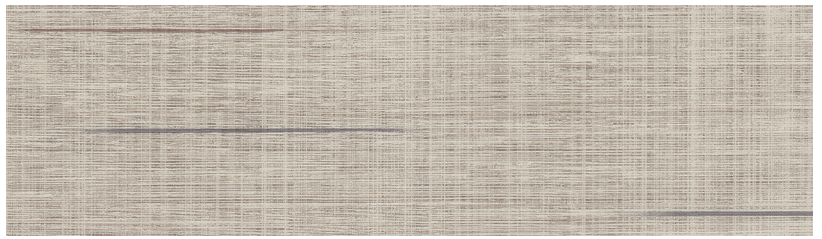
Building Better

We share your commitment to transparency and building a better environment together.

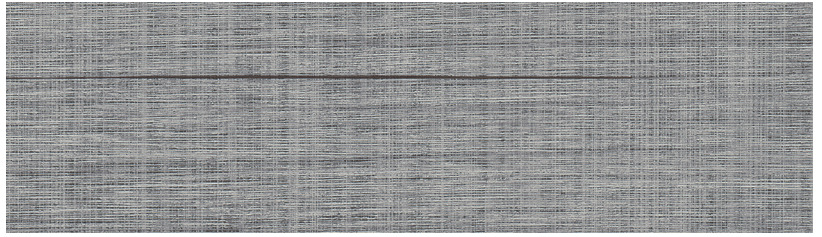
- Low VOC emissions and FloorScore® certified
- Free of ortho-phthalates and heavy metals
- Health Product Declaration (HPD) and third-party certified Environmental Product Declaration (EPD) available
- Made in the USA with global and domestic content



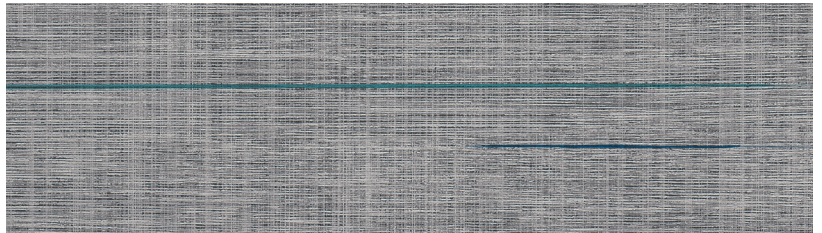
The **Spetto** design captures textural and visual softness in neutral colorways and is available in two sizes: 18 in. x 36 in. tiles and 6 in. x 36 in. planks.



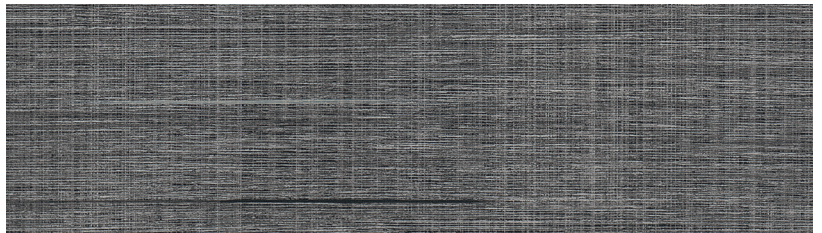
ST931 Spetto, Caspian Sand



ST932 Spetto, English Grey



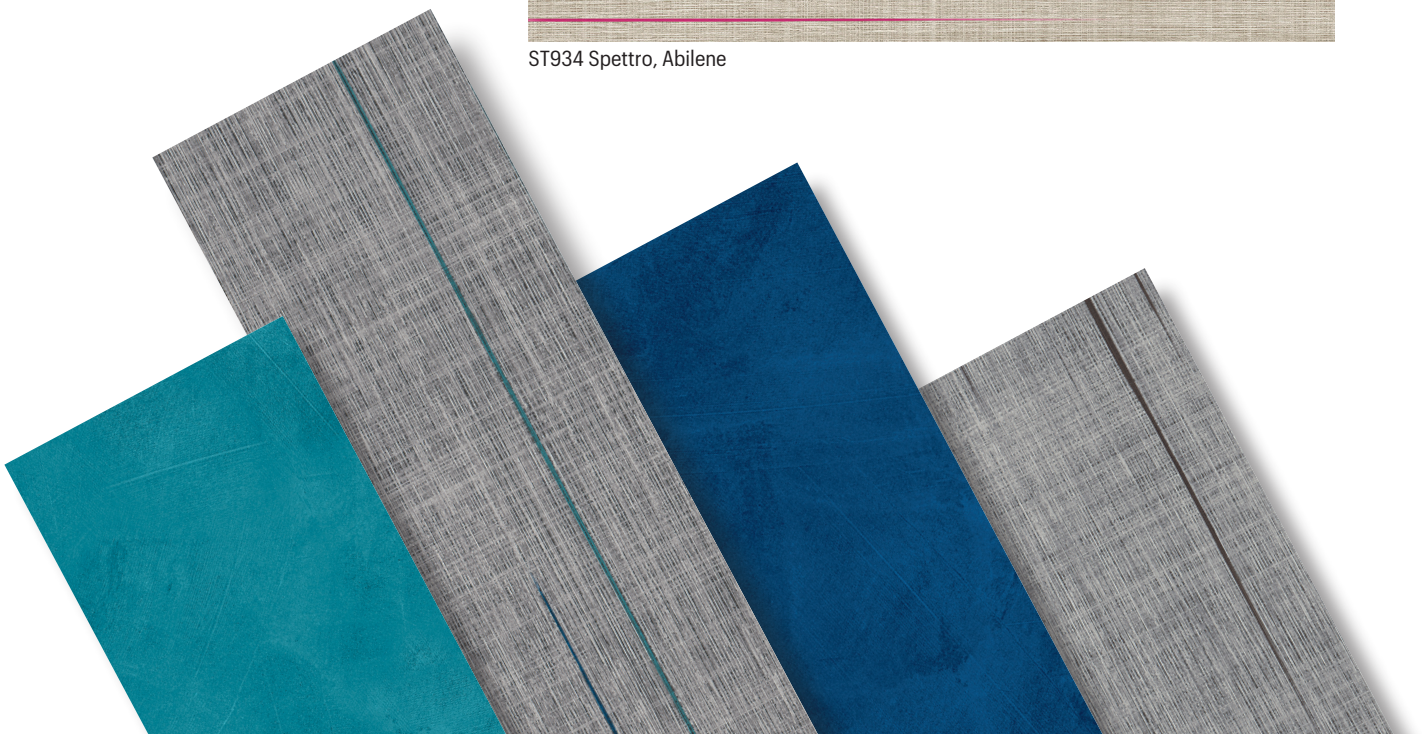
ST2PR Spetto, English Grey with Mixer 2, Blue Hawaiian and Blue Lagoon



ST933 Spetto, Nile Night



ST934 Spetto, Abilene





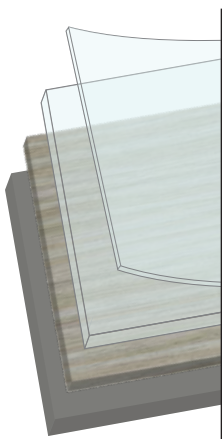
Breakthrough Innovation

Diamond 10[®] Technology is a patented innovation that uses cultured diamonds to provide the ultimate in scratch, stain, and scuff resistance.

With Diamond 10 Technology, you'll never compromise the look you want for the durability you need. Made to stand up to the wear and tear of commercial settings, this low-maintenance solution keeps floors looking newer, longer.



ST932 Spettro, English Grey



1. Diamond 10® Technology

Patented innovation that uses cultured diamonds to provide category-leading scratch, stain, and scuff resistance from edge-to-edge

2. Rigid Wear Layer

The combination of Diamond 10® Technology and the unique rigid wear layer results in enhanced durability and abrasion resistance

3. Realistic Printed Visual

4. Foundation Layer

5. Eased Edge

Designed to blend seamlessly into the next plank for ease of maintenance and cleanability

**20 Year
Commercial
Limited Warranty**

Supported by a 20 Year Commercial Limited Warranty. Add 10 years of overall warranty coverage by using Strong System™ subfloor preparation products. Visit ArmstrongFlooring.com for more information.

Product Information

Construction - Solid Vinyl Tile (Luxury Vinyl Tile / LVT)

International Specifications - ASTM F1700, Class III,
Type B, embossed surface

Overall Thickness - 2.5 mm / 0.100 in.

Wear Layer Thickness - 20 mil / 0.020 in.

Size - Mixer 2 / Spettro – 6 in. x 36 in.

Spettro – 18 in. x 36 in.

Factory Finish - Diamond 10® Technology

Installation - Adhesives: S-1000, S-995, S-319 Roll Strong™

Maintenance Options - No Polish – No Buff, Polish Optional

Color and visual variation is inherent in all resilient products. Prior to installation, we recommend reviewing multiple tiles.

ArmstrongFlooring™

Walk On. Walk Strong.™



Visit ArmstrongFlooring.com

for complete Product, Technical,
Adhesives, Installation and
Maintenance recommendations.



Print#: 7440F10608-124

Printed in USA. | Armstrong and the Armstrong logo are under license from AWI Licensing LLC. | All other trademarks are owned by AHF LLC. | © 2024 AHF LLC
FloorScore® is a registered trademark of the Resilient Floor Covering Institute.