

Mixtera™ - Mosaic SC303 Beige Luster/Green Grass, Prism SC203 Sunlit Aura/Green Grass, Mirage SC503 Sunlit Aura/Green Grass, Duo™ Mixer 2 ST566 Summer Green, ST559 Green Grass



Kaleido™ Color Lab  
Luxury Flooring



Embark on an adventure of creativity with the Kaleido™ Color Lab. Inspired by the fascinating beauty of a kaleidoscope, this program allows you to customize your LVT. You’ll love the dynamic artistry and seemingly endless possibilities that Kaleido brings to your commercial spaces. Empowered to unleash your unique vision, you’ll create floors that perfectly reflect your project’s personality, style, and flair.

It’s Easy and Just Three Simple Steps to Create Your Masterpiece:

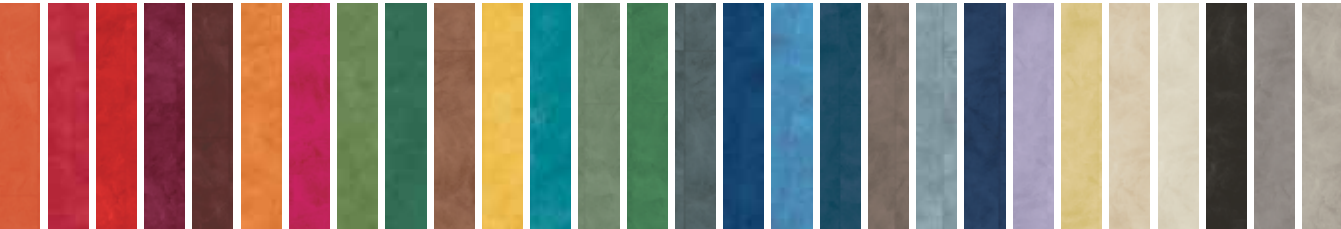
STEP 1

**Choose Your Design Base** – Select from three distinctive designs, each a unique blend of color and pattern.



STEP 2

**Add a Pop of Color** – Pick your accent color from our diverse palette, adding a touch of personality to your space.

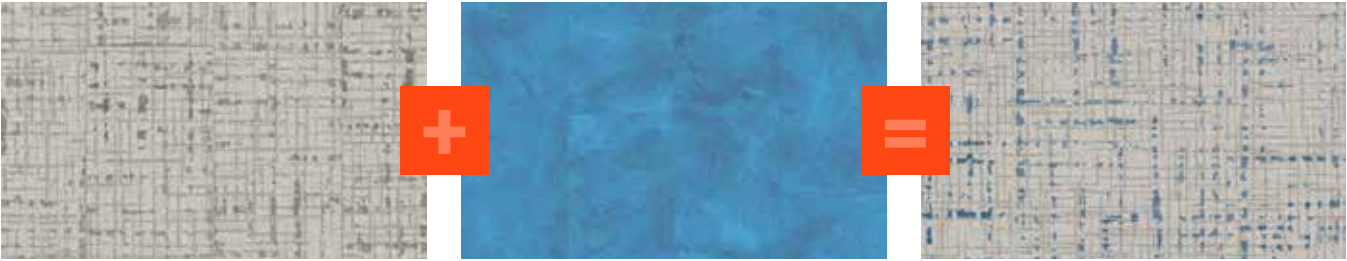


STEP 3

**Select Your Size** – Opt for one of our three popular sizes:



**The Stunning Result** - a color-infused design that reflects your unique style and enhances commercial spaces. Whether you’re creating wayfinding paths, showcasing school colors or corporate branding or simply making a bold statement, our semi-custom solution elevates the environment and will leave a lasting impression.





**Mixtera™**: Prism | Mosaic | Mirage | Tandem  
**Duo™**: Mixer 2 | **Terra™**: Astana  
***WITHOUT CUSTOMIZATION***  
***NO MINIMUM ORDER REQUIRED***

**Design Base** (18" x 18", 18" x 36", 6" x 36")



**Mixtera™** SC200 Prism  
Sunlit Aura



**Mixtera™** SC300 Mosaic  
Beige Luster



**Mixtera™** SC500 Mirage  
Sunlit Aura



**Mixtera™** SC100 Prism  
Vortex Gray



**Mixtera™** SC400 Mosaic  
Tonal Gray



**Mixtera™** SC600 Mirage  
Chromatic Fog

**Complimentary Designs** (18" x 18", 18" x 36", 6" x 36")

Finish your design with Tandem or use alone in your next project.



**Mixtera™** ST567 Tandem  
Beige Luster



**Mixtera™** ST573 Tandem  
Sunlit Aura



**Mixtera™** ST580 Tandem  
Vortex Gray



**Mixtera™** ST570 Tandem  
Tonal Gray



**Mixtera™** ST576 Tandem  
Chromatic Fog

**Pop of Color** (18" x 18", 6" x 36")



**Duo™** ST528 Mixer 2  
Bordeaux



**Terra™** ST384 Astana  
Ochre



**Duo™** ST561 Mixer 2  
Garnet



**Duo™** ST519 Mixer 2  
Fruit Punch



**Duo™** ST565 Mixer 2  
Fiery Red



**Duo™** ST518 Mixer 2  
Tropical Sunrise



**Duo™** ST566 Mixer 2  
Summer Green



**Duo™** ST559 Mixer 2  
Green Grass



**Duo™** ST525 Mixer 2  
Mint Julep



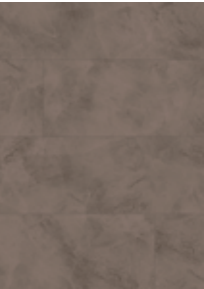
**Duo™** ST526 Mixer 2  
Appletini



**Duo™** ST621 Mixer 2  
Pink Lady



**Duo™** ST517 Mixer 2  
Orange Soda



**Duo™** ST513 Mixer 2  
Root Beer Float



**Terra™** ST388 Astana  
Chalcedony



**Terra™** ST389 Astana  
Azurite



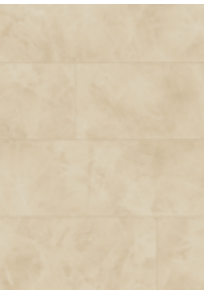
**Duo™** ST563 Mixer 2  
Deep Water



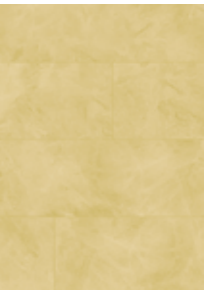
**Duo™** ST564 Mixer 2  
Blue Bird



**Duo™** ST523 Mixer 2  
Blue Hawaiian



**Duo™** ST511 Mixer 2  
Champagne



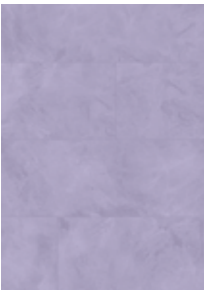
**Duo™** ST562 Mixer 2  
Ginger Gold



**Duo™** ST516 Mixer 2  
Pineapple Juice



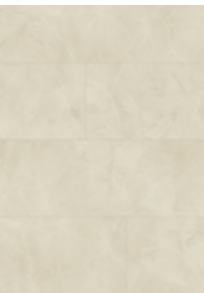
**Duo™** ST524 Mixer 2  
Blue Lagoon



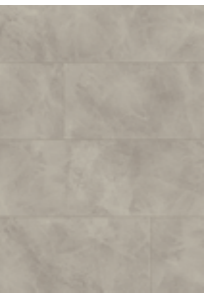
**Duo™** ST560 Mixer 2  
Blueberry



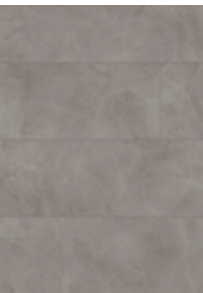
**Duo™** ST529 Mixer 2  
Zinfandel



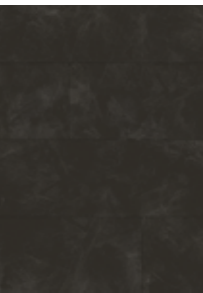
**Duo™** ST510 Mixer 2  
Pina Colada



**Duo™** ST514 Mixer 2  
Club Soda



**Duo™** ST515 Mixer 2  
On the Rocks



**Duo™** ST527 Mixer 2  
Black Tea



## Unleash Your Creativity with Kaleido!

**Not just flooring. A color story you control.  
500 plus combinations!**

- Three signature designs - each in two color ways
  - 28 bold accents
- Five complementary designs
  - Tile and plank formats
  - Size options

**Scan to start designing your  
one-of-a-kind Kaleido design:**

- **Design** a unique pattern
- **Download** design image
- **Visualize** in a room
- **Order** a digital print



**Get started now and have fun designing  
your dream floor with Kaleido Color Lab!**

**Kaleido™ Semi-Custom Designs  
MINIMUM ORDER: 2,500 SQ. FT. PER DESIGN**





**Kaleido™ Color Lab**  
Luxury Flooring

# Design on your terms: Modular. Playful. Creative.

Unlock a world of creative freedom with Kaleido Color Lab, where semi-custom patterns, bold colors, and neutral bases blend seamlessly to bring your next project to life. The design potential is limited only by your imagination.



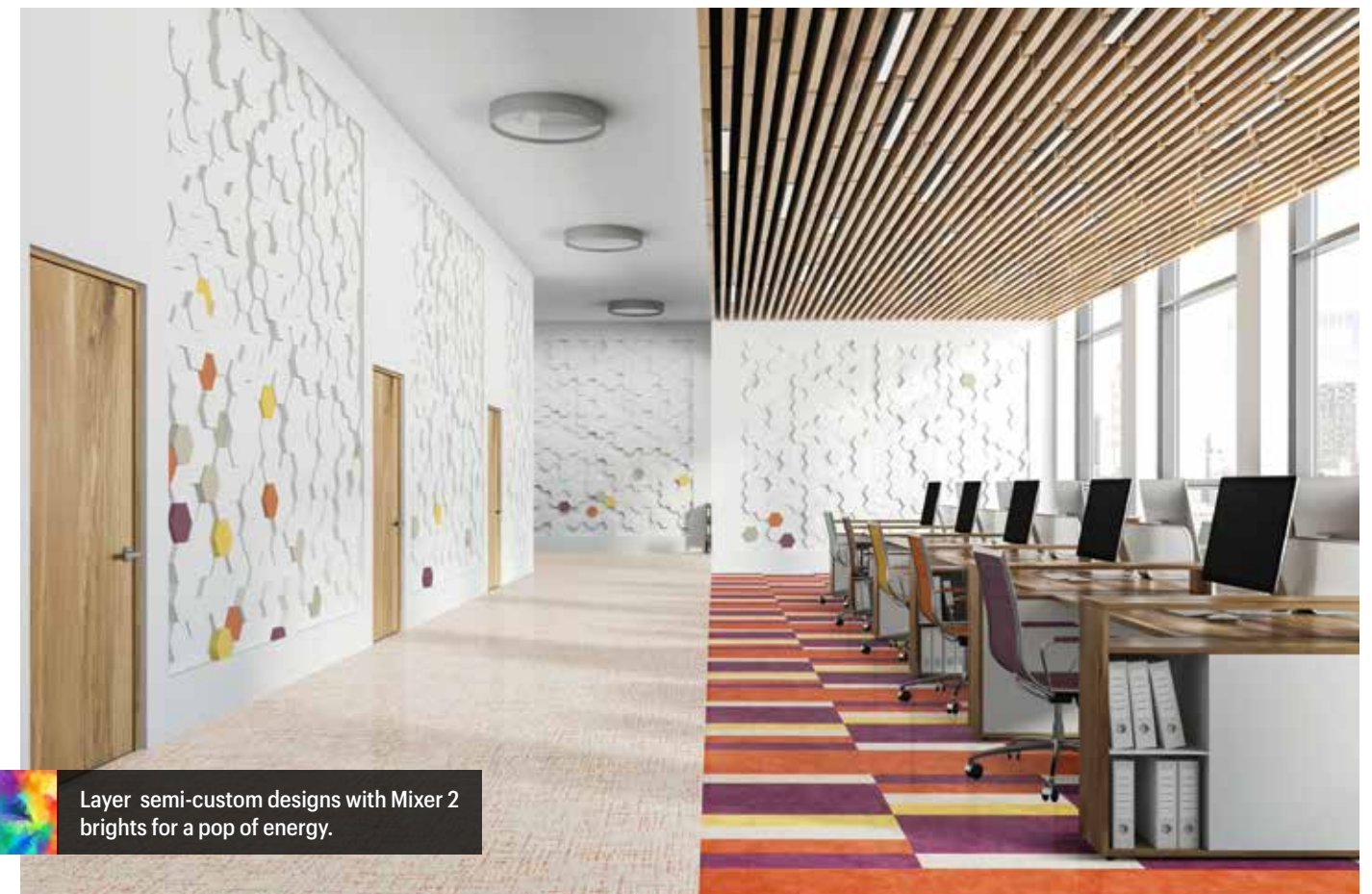
Go maximal with all three signature designs transitioning from one to another.

Mixtera™ - Prism SC225 Sunlit Aura/Deep Water, Mosaic SC425 Tonal Gray/Deep Water, Mirage SC625 Chromatic Fog/Deep Water



Go minimalist with just one unique design as your visual anchor.

Mixtera™ - Mirage SC621 Chromatic Fog/Black Tea



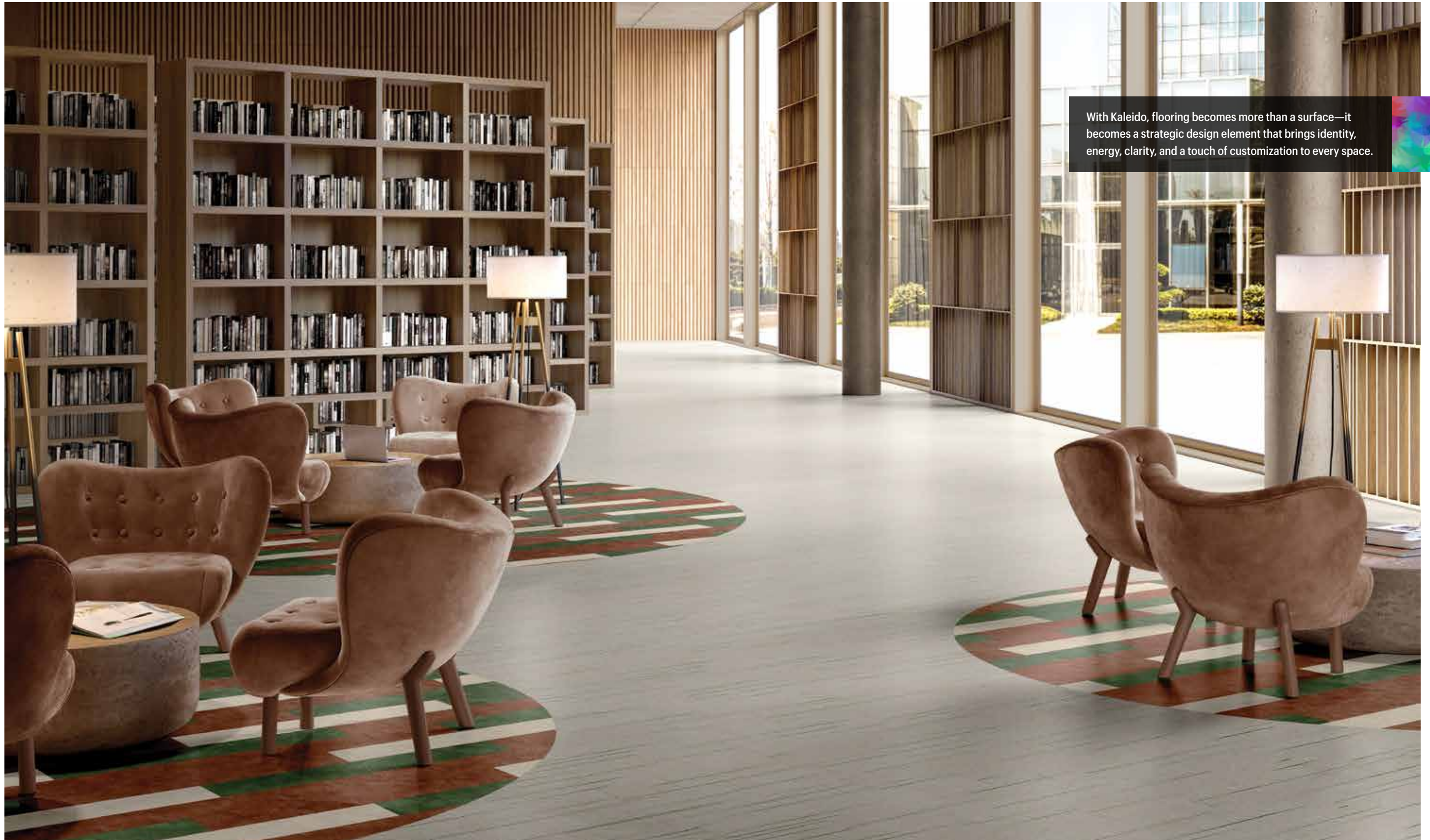
Layer semi-custom designs with Mixer 2 brights for a pop of energy.

Mixtera™ - Mosaic SC310 Beige Luster/Tropical Sunrise, Tandem ST567 Beige Luster; Duo™ - Mixer 2 ST518 Tropical Sunrise, ST561 Garnet, ST516 Pineapple Juice





## Kaleido™ Color Lab Luxury Flooring



With Kaleido, flooring becomes more than a surface—it becomes a strategic design element that brings identity, energy, clarity, and a touch of customization to every space.







## Kaleido™ Color Lab Luxury Flooring



Our Luxury Flooring mimics the appearance of carpet, perfect for high-traffic areas and offers a low maintenance solution.





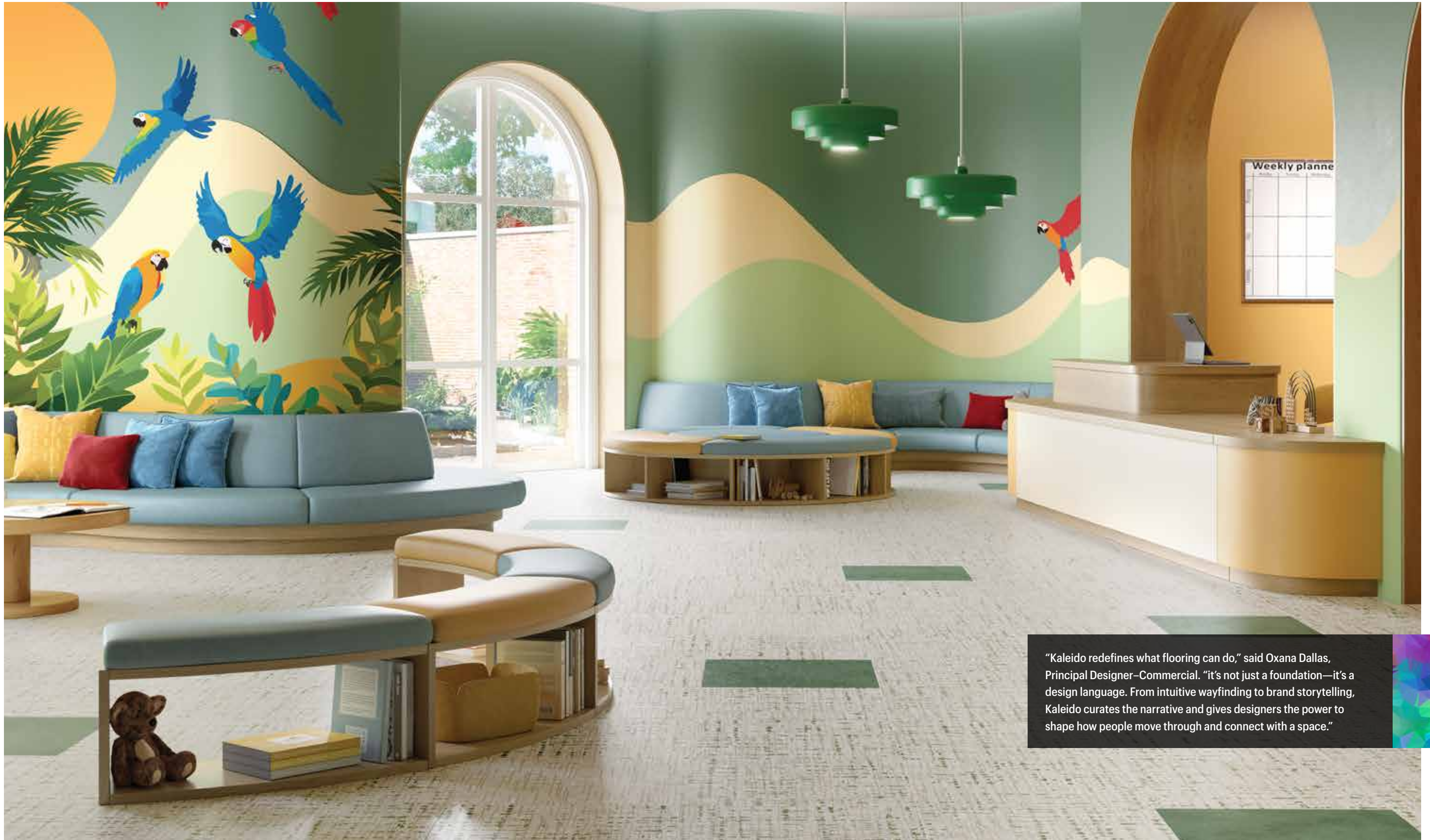
## Kaleido™ Color Lab Luxury Flooring







## Kaleido™ Color Lab Luxury Flooring



“Kaleido redefines what flooring can do,” said Oxana Dallas, Principal Designer–Commercial. “it’s not just a foundation—it’s a design language. From intuitive wayfinding to brand storytelling, Kaleido curates the narrative and gives designers the power to shape how people move through and connect with a space.”





## Kaleido™ Color Lab Luxury Flooring



Flooring can take the lead in guiding flow and shaping identity—helping define spaces, direct movement, and create clarity across every kind of facility. With the power of color and pattern, flooring defines zones, supports intuitive wayfinding, and helps users navigate with precision and confidence.





## Kaleido™ Color Lab Luxury Flooring



Well-designed spaces can enhance patient experience and improve quality of care in healing environments. Flooring provides critical support and performance for a wide range of specialized healthcare spaces.





## Kaleido™ Color Lab Luxury Flooring







## Kaleido™ Color Lab Luxury Flooring



Design, performance, and sustainability converge to create better work environments that encourage collaboration and creativity.



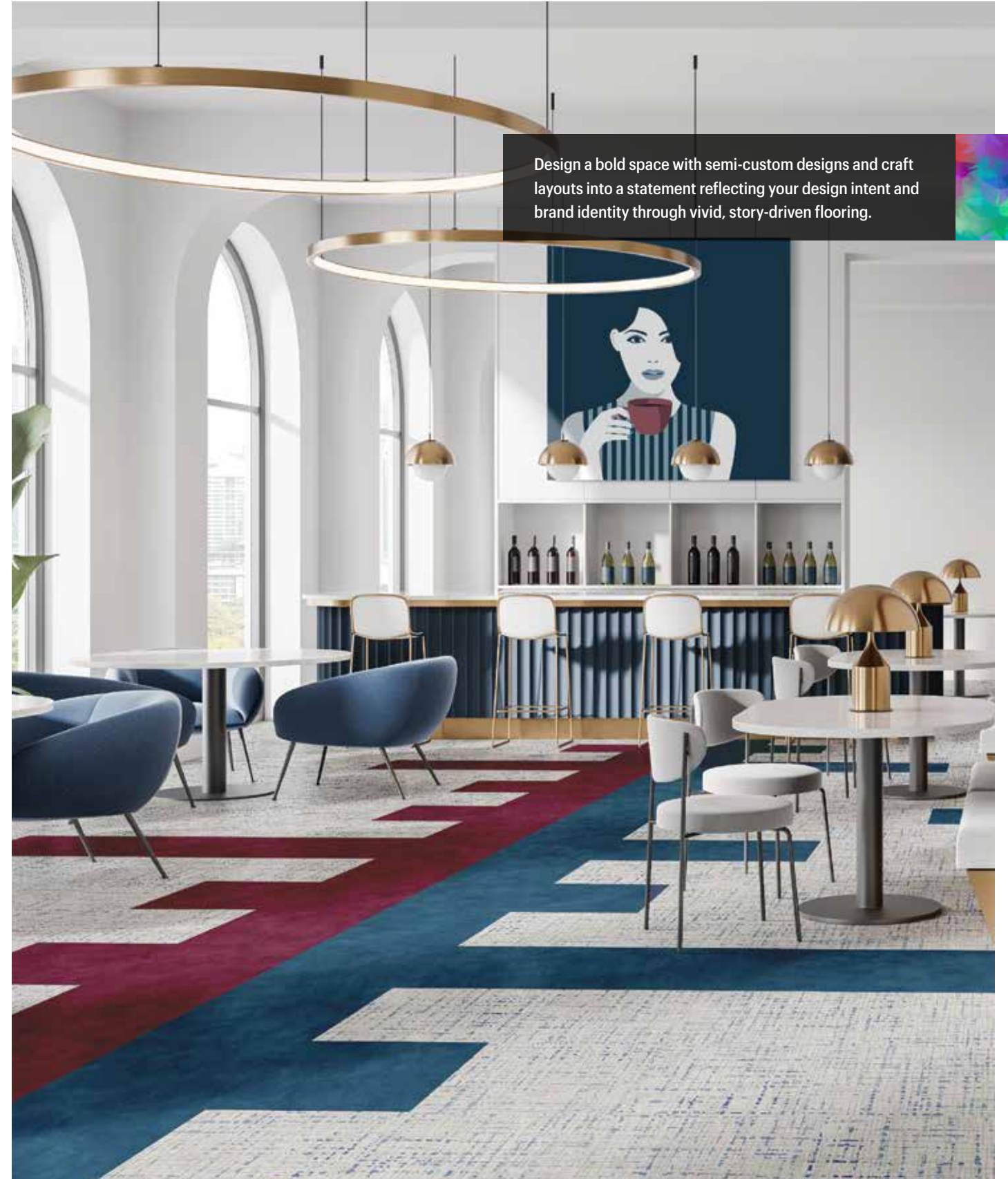




**Kaleido™ Color Lab**  
Luxury Flooring



Mixtera™ - Mirage SC607 Chromatic Fog/Pineapple Juice; Duo™ - Mixer 2 ST514 Club Soda, ST515 On the Rocks, ST516 Pineapple Juice



Mixtera™ - Mosaic SC425 Tonal Gray/Deep Water; Duo™ - Mixer 2 ST561 Garnet, ST563 Deep Water





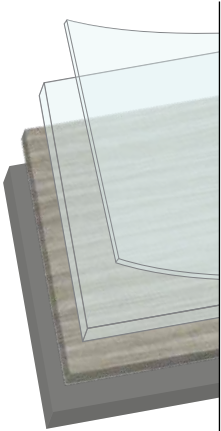
**Kaleido™ Color Lab**  
Luxury Flooring

# Proven Performance

Diamond 10® Technology is a patented innovation that uses cultured diamonds to provide the ultimate in scratch, stain, and scuff resistance.

With Diamond 10 Technology, you'll never compromise the look you want for the durability you need. Made to stand up to the wear and tear of commercial settings, this low-maintenance solution keeps floors looking newer, longer.

## Diamond 10 Technology™



### 1. Diamond 10® Technology

Patented innovation that uses cultured diamonds to provide category-leading scratch, stain, and scuff resistance from edge-to-edge

### 2. Rigid Wear Layer

The combination of Diamond 10® Technology and the unique rigid wear layer results in enhanced durability and abrasion resistance

### 3. Realistic Printed Visual

### 4. Foundation Layer

### 5. Eased Edge

Designed to blend seamlessly into the next plank for ease of maintenance and cleanability

## 20 Year Commercial Limited Warranty

Supported by a 20 Year Commercial Limited Warranty. **Add 10 years of overall warranty coverage by using Strong System™ subfloor preparation products.** Visit [ArmstrongFlooring.com](https://www.armstrongflooring.com) for more information.



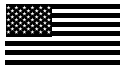




**Kaleido™ Color Lab**  
Luxury Flooring

## Building Better

We share your commitment to transparency and building a better environment together.

- Low VOC emissions and FloorScore® certified
- Free of ortho-phthalates and heavy metals
- Health Product Declaration (HPD) and third-party certified Environmental Product Declaration (EPD) available
- Made in the USA with global and domestic content 



Mixtera™ - Prism SC203 Sunlit Aura/Green Grass, Mosaic SC303 Beige Luster/Green Grass, Mirage SC503 Sunlit Aura/Green Grass; Duo™ - Mixer 2 ST566 Summer Green, ST559 Green Grass





**Kaleido™ Color Lab**  
Luxury Flooring

## Product Information

**Construction** - Solid Vinyl Tile (Luxury Vinyl Tile / LVT)

**International Specifications** - ASTM F1700, Class III,  
Type B, embossed surface

**Overall Thickness** - 2.5 mm / 0.100 in.

**Wear Layer Thickness** - 20 mil / 0.020 in.

**Size - Mixtera** Prism, Mirage, Mosaic, Tandem – 18 in. x 18 in., 18 in. x 36 in., 6 in. x 36 in.

**Duo Mixer 2, Terra** Astana -- 18 in. x 18 in., 6 in. x 36 in.

**Factory Finish** - Diamond 10® Technology

**Installation** - Adhesives: S-1000, S-995, S-319 Roll Strong™

**Maintenance Options** - No Polish – No Buff, Polish Optional

Color and visual variation is inherent in all resilient products. Prior to installation, we recommend reviewing a digital print.

---

# ArmstrongFlooring®

Walk On. Walk Strong.®



**Visit [ArmstrongFlooring.com](https://www.armstrongflooring.com)**

for complete Product, Technical,  
Adhesives, Installation, and  
Maintenance recommendations.

