

Zenscape: Abstra 80741 Orchid, Aurora 80731 Orchid, Allure 80771 Amaranthus, Nidra: Brittnau Oak 80873 Cedar, Elements 80863 Splash



Nidra™ | Zenscape™
Heterogeneous Sheet





Zenscape: Aurora 80730 Lotus, Nidra: Brittnau Oak 80875 Ylang, 80876 Patchouli

Reshaping Spaces with Nidra™ and Zenscape™

Discover the harmonious fusion of Nidra™ and Zenscape™. Ideal for healthcare and educational environments, our unique palette of abstract and organic wood grain and textile-inspired visuals creates harmonious and therapeutic atmospheres that foster well-being and learning.

Nidra™ Collection

The Nidra collection is inspired by the organic beauty of wood grains and the calming spirit that emerges when connected to nature.

Transform any commercial space into a serene oasis with our carefully curated collection of wood tones, bringing the warmth and tranquility of nature indoors. This harmonious blend of natural elements creates a haven of comfort and relaxation.





80870 Palo Santo

WH206



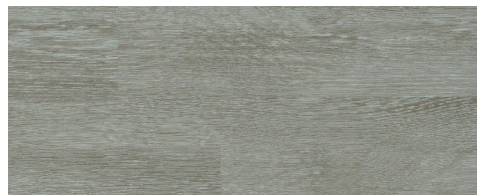
80875 Ylang

WG114



80871 Arrowroot

WN111



80873 Cedar

WH234



80872 Vetiver

WN111



80878 Melissa

WG104



80874 Lavender

WH234



80876 Patchouli

WE112



80877 Sandal

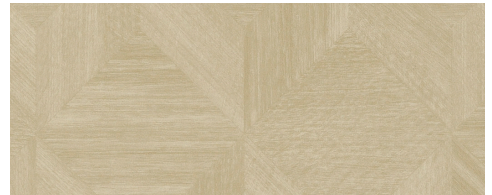
WE118

Brittnau Oak design is available in nine colorways ranging from light and airy to dark and nutty. Brittnau Oak showcases an assortment of simplistic patterns with low-to-mid-grain visuals throughout.

Continuum Solutions

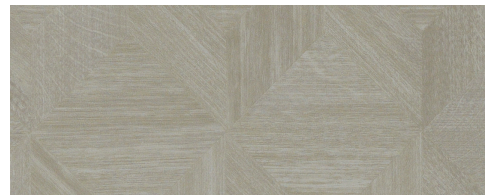
Nidra™ | Imperial® Texture

Introduce another design dimension with Vinyl Composition Tile (VCT). Integrate an unexpected burst of color, create flowing linear patterns and intermix non-directional visuals into your interior spaces. The proven performance of VCT combined with Nidra or Zenscape will create beautiful spaces with durable construction for high-traffic areas.



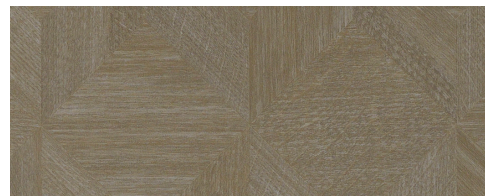
80860 Pyre

WE135



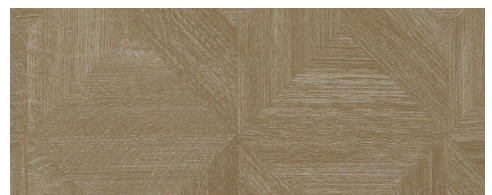
80861 Zephr

WH234



80863 Splash

WE118



80862 Terrain

WE136

Elements, inspired by the classic parquet layout, creates a welcoming atmosphere that invites relaxation and productivity.

Continuum Solutions

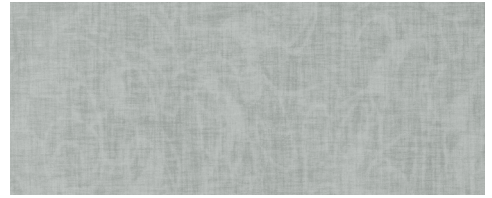
Nidra™ | Zenscape™



Zenscape™ Collection

Beautiful in its linear simplicity, the Zenscape collection includes three designs – Aurora, AbstrA and Allure. Intended to create serene, reflective spaces, Zenscape is available in 16 colorways and draws inspiration from elements found within nature such as ocean foam, sand, and waves.





80770 Laurel

WN112



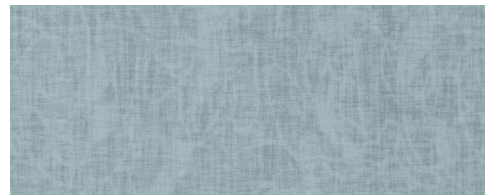
80771 Amaranthus

WH204



80773 Cade

WG103



80772 Bergamot

WE137

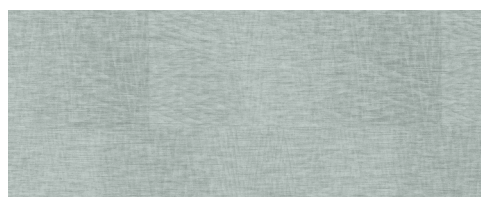
Allure embraces the movement of a gentle breeze over calm water with soothing wave-like patterns throughout. The intentionally asymmetric patterns bring forth a sense of warmth and comfort atop the cooler, textured undertones.

AbstrA draws inspiration from the calming tides of water and the curious patterns found along sandy shores. AbstrA features a textured, gradient design and is available in six colorways.



80743 Danshen

WN108



80741 Orchid

WN113



80740 Lotus

WN112



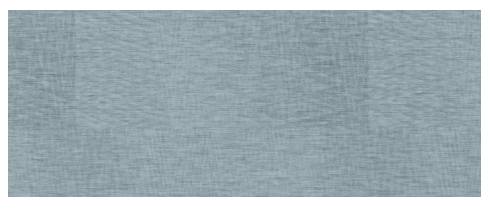
80742 Kava

WE128



80745 Hawthorn

WE137



80744 Blue Agave

WE138

Aurora is designed to channel feelings of inner-peace and mindfulness. Aurora's subtle vertical patterns and biophilic inspired colorways blur the lines between indoors and out.



80733 Danshen

WN113



80731 Orchid

WN102



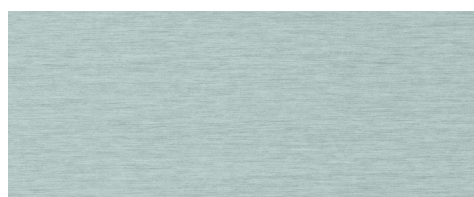
80730 Lotus

WG102



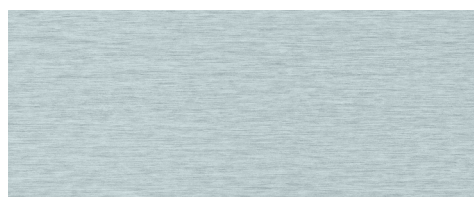
80732 Kava

WE131



80735 Hawthorn

WH204



80734 Blue Agave

WG103





AMERICANO
CAPPUCCINO
LATTE
MOCHA
ESPRESSO
MACCHIATO
TEA

Reveal Everything

Armstrong Flooring™ is committed to bold transparency – in a way that is easy to understand, easy to access and verified to be true by third-party evaluators. Our goal is to make your job easier when it comes to making sustainable choices.

- Health Product Declaration (HPD) and third-party certified Environmental Product Declaration (EPD) available
- Low VOC emissions and FloorScore® certified
- Free of ortho-phthalates and heavy metals







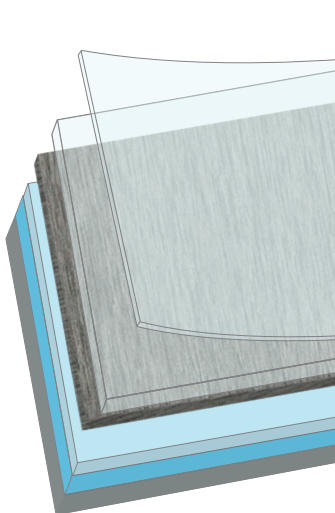
Proven Performance

Manufactured with Diamond 10® Technology, Nidra and Zenscape are engineered to stand up to the wear and tear of commercial settings.

- A low maintenance solution – no polishing, stripping, or restorative maintenance required
- Provides enhanced traction for an added measure of safety where it matters most – achieves R10 Rating per standard DIN EN 51130
- Features reinforced calendared layers for protection from rips, tears, and gouges
- Protects against scratches, stains, and scuffs for floors that look newer, longer



Nidra: Brittnau Oak 80877 Sandal, Zenscape: Aurora 80731 Orchid



1. Diamond 10® Technology with Enhanced Traction - cultured diamond-infused coating for scratch, stain, scuff, and slip resistance
2. Performance Wear Layer
3. Designer Printed Visual
4. Fiberglass-Reinforced Base

10 Year Commercial Limited Warranty

Supported by a 10 Year Commercial Warranty. Visit armstrongflooring.com for more information.

Add 10 years of overall warranty coverage by using Strong System™ subfloor preparation products. Visit ArmstrongFlooring.com for more information

Product Information

Construction - Heterogeneous Sheet

International Specifications - ASTM F1303, Type I, Grade 1, Class B

Overall Thickness - 0.080 in. (2.0 mm)

Wear Layer Thickness - 0.022 in. (0.55 mm)

Size - 6.56 ft. (2.0 m) wide up to 75.5 ft. (23 m) long

Factory Finish - Diamond 10® Technology

Installation - S-995 Adhesive, Flip® Spray Adhesive,
Heat Weld or S-763 Seam Adhesive

Maintenance Options - Polish Optional

Shade may vary from sample.

ArmstrongFlooring™



Visit [ArmstrongFlooring.com](https://www.armstrongflooring.com)

for complete Product, Technical,
Adhesives, Installation and
Maintenance recommendations.



Print#: 7440F10779-924

Armstrong and the Armstrong logo are under license from AWI Licensing LLC. | FloorScore® and the FloorScore® logo are registered trademarks of the Resilient Floor Covering Institute. All other trademarks are owned by AHF Products LLC. | © 2024 AHF Products LLC.