

DECORART™ POSSIBILITIES® | CORLON®

Heterogeneous Sheet



Performance Through and Through

- Excellent gouge resistance created by through-color, through-pattern wear layer
- Polyester backing and inlaid wear layer resist damage from rolling loads
- Tested 500 PSI rating for floors that resist indentation from heavy static loads
- UV-cured urethane coating protects the floor's appearance and improves scuff mark resistance
- Low maintenance options conserve energy and natural resources

Ease of Installation

- Polyester backing gives our inlaid products the flexibility to be easily flash-coved
- Can be used with S-543 high moisture commercial sheet flooring adhesive up to a limit of 90% internal relative humidity. Reduce the wait time for installation or the need for moisture remediation systems
- Heat weld and flash cove for spaces requiring seamless installations with superior infection control
- Possibilities® and Corlon® can be seamed with S-761 seam adhesive for non-aseptic spaces, which saves installation time, materials and costs



Weld rod seam



S-761 seam option

Beneath the surface

	Heterogeneous Design Series	Heterogeneous Inlaid	Heterogeneous Cushion	Homogenous
Considerations	Best choice for variety of visuals in commercial sheet flooring	Most economical choice in commercial sheet flooring	Commercial durability with home-like feel	Best choice for operating rooms or other applications that require gouge and abrasion resistance
Construction				
Products	Rejuvenations™ Ambigu™ StoneRun™ TimberLine®	Possibilities® Corlon®	Abode™	Meditone™ Medintech®
Performance Attributes	<ul style="list-style-type: none"> • Very abrasion resistant • Suitable for aseptic application when heat welded and flash covered • Easy-to-maintain surface protected by UV coating • Excellent static load resistance 	<ul style="list-style-type: none"> • Gouge and abrasion resistant • Suitable for aseptic application when heat welded and flash covered • Easy-to-maintain surface protected by UV coating • Very good static load resistance 	<ul style="list-style-type: none"> • Excellent durability with a 20 mil wear layer • Easy-to-maintain surface protected by UV coating 	<ul style="list-style-type: none"> • Best combination of gouge and abrasion resistance • Superior aseptic qualities when heat welded and flash covered • Easy-to-maintain surface protected by UV coating • Excellent static load resistance
Gauge (nominal thickness)	0.080 in. (2.0 mm)	0.080 in. (2.0 mm)	0.080 in. (2.0 mm)	0.080 in. (2.0 mm)
Wear Layer Thickness	0.022 in. (0.55 mm)	POSSIBILITIES Petit Point 0.040 in. (1.00 mm) Connection CORLON 0.050 in. (1.27 mm)	0.020 in. (0.5 mm)	0.080 in. (2.0 mm)
Static Load Limit	750 PSI (52.73 kg/cm ²)	500 PSI (35.16 kg/cm ²)	175 PSI (12.3 kg/cm ²)	750 PSI (52.73 kg/cm ²)
Installation				
MVER Calcium Chloride Test (lbs./1000 sq. ft./24 hrs.)	5 8 when using S-240	5 8 when using S-240	5-9	5
Relative Humidity Insitu Probe	93 using Flip®, 90 using S-240 & S-543, 85 using S-599	93 using Flip®, 90 using S-240 & S-543, 85 using S-599	90 using S-288, 80 using S-289	93 using Flip®, 90 using S-240 & S-543, 85 using S-599
pH Readings	5-9 5-11 when using S-543 or Flip® Spray Adhesive	5-9 5-11 when using S-543 or Flip® Spray Adhesive	5-9	5-9 5-11 when using S-543 or Flip® Spray Adhesive
Seaming Options	Solid WELD RODS S-761 Seam Adhesive	Solid WELD RODS S-761 Seam Adhesive	S-761 Seam Adhesive	Patterned WELD RODS Solid WELD RODS S-761 Seam Adhesive
Maintenance Options				
Polish	✓	✓	✓	✓
No Polish/Spray Buff*	✓	✓	✓	✓
No Polish/Dry Buff*	Not Recommended	✓	✓	Not Recommended
No Polish/No Buff*	✓	Not Recommended	Not Recommended	Not Recommended

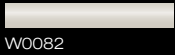
*Low maintenance option

POSSIBILITIES®

Heterogeneous Sheet



88091
colored earth



W0082



88213
white sand



W0011



88202
pebblewash



W0670



88098
brushed sand



W0025



88201
cream hint



W0083



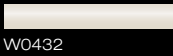
88052
pearl gray



W0631



88065
almond white



W0432



88053
sand bar



W0080



88214
montelimar beige



W0085



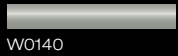
88206
blue retreat



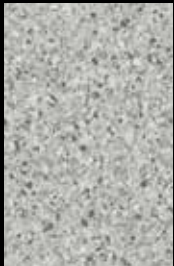
W0206



88097
tea garden green



W0140



88055
ash gray



W0026



88067
painted desert



W0611



88079
wet sand



W0353



88078
sandpiper beige



W0081



88208
eastern sage



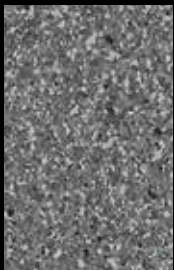
W0208



88096
sage greenery



W0651



88210
charcoal gray



W0084



88211
purple brown



W0178



88215
chocolate delite



W0744



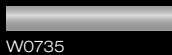
88203
woodtone blush



W0203



88209
river bed



W0735

Darkener-colored patterns may be susceptible to scratch whitening. These colors may require more frequent maintenance if used in field areas: 88079, 88097, 88203, 88206, 88208, 88210, 88211, 88215.

CORLON®

Heterogeneous Sheet



88724
porcelain



W0663



88731
light gold



W0664



88705
devon beige



W0648



88735
red glow



W0657



88728
bittersweet



W0652



88702
white cliffs



W0649



88703
desert sand



W0868



88712
limestone



W0532



88732
yellow gold



W0654



88734
terracotta



W0656



88736
blue dream



W0658



88701
granite gray



W0647



88713
sandstone



W0662



88704
stone harbor



W0650



88726
nougatine



W0358



88729
blue yonder



W0849



88737
azure gray



W0659



88700
anthracite



W0646



88717
otter gray



W0672



88727
fall brown



W0738



88730
ocean green



W0653



88738
green olive



W0660

Darker-colored patterns may be susceptible to scratch whitening. These colors may require more frequent maintenance if used in field areas: 88700, 88701, 88728, 88735, 88736, 88738.

RECOMMENDED APPLICATIONS

This chart provides an overview of recommendations by end-use market and for specific spaces. Use these recommendations as a guideline for selecting Armstrong flooring for your application.

H = Highly Recommended

R = Recommended

N = Not Recommended

The best flooring choice(s) for the space.

Flooring choice(s) that are suitable for the space.

Flooring that should not be used for the space.

• The ratings of H, R or N are based on an evaluation of the performance, cost and aesthetic requirements of the space.

HEALTHCARE/HOSPITAL (a)

Products	Around Swimming Pool	Around Whirlpool/Spa	Cafeteria, Dining Area (e)	Chapel	Commercial Parking Garage/Walkway	Computer Training Room	Corridor	Critical/Intensive Care	Data Warehousing	Dialysis (l)	Dry Physical Therapy	Elevator	Emergency Room	Exam/Procedure Room	Gift Shop	Hydro Physical Therapy	Hyperbaric Room	Laboratory	Labor Delivery Room	Lavatory	Lobby	Nurse's Station	Office/Admin./Conf. Room	Operating Room (b)	Patient Room	Pharmacy	Ramp/Ramped Corridor (Dry)	Scrub Area	Stairway/Landing	Staff Lounge	Telecommunications Center	Utility/Storage/Filing Room	Waiting Room
SHEET																																	
POSSIBILITIES®	N	N (3)	H	H	N	H	H	H	N	H	H	H	H	H	N (3)	N (6)	H	H	H	H	H	R	R	H	H	N (3)	R (l)	R	R	N	R	R	H
CORLON®	N	N (3)	H	H	N	H	H	H	N	H	H	H	H	H	N (3)	N (6)	H	H	H	H	H	R	R	H	H	N (3)	R (l)	R	R	N	R	R	H

EDUCATION/INSTITUTIONAL

Products	Around Swimming Pool	Auditorium	Cafeteria, Dining Area (e)	Classroom/Lecture Hall	Commercial Parking Garage/Walkway	Computer Repair Area	Computer Training Room (e)	Corridor	Data Warehousing	Dormitory Room	Elevator	Entry/Way/Foyer (l)	Food Service Area (e)	Gymnasium	Laboratory	Library	Locker Room (no spikes)	Multipurpose/Cafeteria	Office/Administrative/Conference Room	Ramp/Ramped Corridor (Dry)	Shower/Shower Room	Stairway/Landing	Teacher's Lounge	Telecommunications Center	Utility/Storage Area	
SHEET																										
POSSIBILITIES®	N	H	H	H	N	N	H	H	N	H	H	N	R (l)	R	H	H	R	N (3)	H	H	N (3)	N (3)	R	H	N	R
CORLON®	N	H	H	H	N	N	H	H	N	H	H	N	R (l)	R	H	H	R	N (3)	H	H	N (3)	N (3)	R	H	N	R

HOSPITALITY

Products	Around Swimming Pool	Around Whirlpool/Spa	Commercial Parking Garage/Walkway	Corridor	Dance Floor	Dining Area (e)	Elevator	Entry/Way/Foyer (l)	Exercise Room	Guest Bathroom (l)	Guest Room	Lobby	Lounge	Stairway/Landing	Vending Area (l)
SHEET															
POSSIBILITIES®	N	N (3)	N	H	R	R	H	N	R	H	H	H	H	R	R
CORLON®	N	N (3)	N	H	R	R	H	N	R	H	H	H	H	R	R

ASSISTED LIVING/MILITARY HOUSING/LIGHT COMMERCIAL

Products	Activity Room/Common Area	Beauty Salon/Barber Shop	Corridor	Daycare Area	Dining Area (e)	Doctor/Dentist Office	Residence Bathroom (l)	Residence Kitchen (e)	Residence Room/Barrack
SHEET									
POSSIBILITIES®	H	H	H	H	H	H	H	H	H
CORLON®	H	H	H	H	H	H	H	H	H

NOTES:

- Numerical footnotes apply to the space requirements.
- Alpha footnotes apply to the product's suitability for the space. The numerical and alpha footnotes are consistent across all Recommended Applications Charts [e.g., (a) is the same footnote for linoleum as it is for vinyl, etc.]. Depending upon the category, product and space requirements, some footnotes may not appear.

In addition to spaces listed on these charts:

- Armstrong floors may be used on stair steps, risers and landings. A manufactured slip-retardant nosing should always be applied on steps.
- Most Armstrong commercial sheet floors can be flash coved (integral cove). Most building codes consider flash coving in the same category as baseboard trim with respect to fire rating. Consult applicable codes for the particular project to determine the interpretation of allowable height for flash cove.
- Armstrong floors **are not recommended** for exterior use, for interior spaces where pointed spike golf or track shoes will be used, or in areas where the floor will be subjected to unusually concentrated static or dynamic loads.
- Armstrong floors **should not be used** as wall covering or wall surfacing.

RETAIL/STORES

Products	Automobile Showroom	Checkout/Cash Wrap	Computer Repair Area	Commercial Kitchen	Entryway/Foyer (f)	Fast Food Counter (i)	Fast Food Counter (behind)	Floral Area/Garden (front)	Food Service (e)	Frozen Food	Indoor Mail Common Area	Laundromat	Meat/Seafood Counter	Pat Shop	Photo Processing (behind)	Produce Area	Sales Floor - Grocery	Sales Floor - Department Store	Sales Floor - Mass Merchant
SHEET																			
POSSIBILITIES*	H	H	N	N	N	N	R	R	H (j)	R	N	R	N	R	R	R	R	R	R
CORLON®	H	H	N	N	N	N	R	R	H (j)	R	N	R	N	R	R	R	R	R	R

LIGHT INDUSTRIAL (g)

Products	Clean Room	Computer Lab Repair Area	Computer Training Room	Data Warehousing	Electronic Testing Lab	Environmental Manufacturing	Conditioning Unit (m)	Office/Conference Room	Photo Processing	Production Laboratory	Research Laboratory	Small Parts Assembly	Sterile Packaging	Telecommunications Center
SHEET														
POSSIBILITIES*	H	N (6)	H	N	N (6)	N (6)	N	H	R	H	H	H	H	N
CORLON®	R	N (6)	H	N	N (6)	N (6)	N	H	R	R	R	R	R	N

OFFICE

Products	Cafeteria/Dining Area (e)	Commercial Parking Garage/Walkway	Computer Repair Area	Computer Training Room	Corridor	Data Warehousing	Elevator	Entryway/Foyer**	Lobby	Lunchroom (e)	Office/Administration/Conference Room	Stairway/Landing	Telecommunications Center	Utility/Storage Rooms
SHEET														
POSSIBILITIES*	H	N	N	H	H	N	H	H	H	H	R	N	R	
CORLON®	H	N	N	H	H	N	H	H	H	H	R	N	R	

TRANSPORTATION

Products	Airport/Railway/Bus Terminal	City/Convention Center	Museum/Cultural Center	
SHEET				
POSSIBILITIES*		N	N	R
CORLON®		N	N	R

(a) In most cases veterinary applications are similar
 (b) Only operating rooms not requiring conductive flooring
 (e) Armstrong floors are not recommended for commercial kitchens and commercial food processing areas, including behind fast-food counters
 (g) Most Armstrong floors are not recommended for heavy industrial areas
 (h) Heat weld recommended
 **Recommendation is based upon the use of walk-off mats in entryways and over key pivot points.

(i) No standing water walk-off mats required
 (k) Heat weld only
 (1) Aseptic Area - Hygienic conditions are of critical importance
 (2) Water Resistance - Wet area installation is needed (flash coving, sealed seams)
 (3) Slip Retardance - A more secure walking surface is required
 (6) Not recommended in areas that require electrostatic discharge control

COMPARATIVE DATA

Products	Overall Thickness (nominal) (1)	Wear Layer (nominal) (1)	Static Load Limit per ASTM F 970 PSI (kg/cm ²)	Durability (3)	Maintainability (3)	Resilience (3)	International Specifications (4)	Fire Test Data (5) ASTM E 648 Flooring Radiant Panel Critical Radiant Flux – 0.45 watts/cm ² or more, Class I ASTM E 662 Smoke Chamber Specific Optical Smoke Density – 450 or less
SHEET								
Possibilities®	0.080 in. (2.0 mm)	0.040 in. (1.00 mm)	500 (35.16) (2b)	VG	E	VG	ASTM F 1303, Type II, Grade 2, Class A backing	Meets
Corlon®		0.050 in. (1.27 mm)					ASTM F 1303, Type II, Grade 1, Class A backing ISO 10582, Type II	

- Overall and wear layer thicknesses are nominal and subject to normal manufacturing variances.
- No visually apparent indentation.
- Subjective ratings (Excellent, Very Good, Good, Fair) are in relation to other Armstrong® commercial resilient floors. Ratings are not directly related to any one test. They are broadly based on tests and experience of Armstrong R & D under varying conditions and circumstances. These ratings should NOT be used for comparison to ratings used by other manufacturers to rank their own products.

- Reference Specifications: Armstrong products are manufactured to meet or exceed specification requirements.
- Numerical flammability ratings alone may not define product performance under actual fire conditions. These ratings are provided only for use in the selection of products to meet specified limits.

LIGHT REFLECTIVITY VALUES IN PERCENT

0-9	10-14	15-19	20-24	25-29	30-34	35-39	40-44	45-49	50-54	55-59	60-64	65-69	70-74
88700	88728	88210	88206	88097	88079	88055	88067	88053	88052	88065	88213		
		88701	88211	88209	88208	88203	88729	88078	88098	88091			
		88735	88215	88734	88713	88214	88730	88096	88202	88703			
			88736	88737	88717		88732	88201	88712	88705			
				88738	88727			88702	88731	88724			
								88704					
								88726					

Sustainability Facts		Possibilities	Corlon
Materials	Certified Low Emitting LEED® EQ4.3 Indoor Air Quality	✓	✓
	Adhesives Certified Low Emitting LEED EQ4.1 SCAQMD Rule 1168 Compliant	✓ ✓	✓
Certifications & Programs	FloorScore™ Certified to CDPH Standard Method V1.1-2010	✓	✓
	Collaborative for High Performance Schools CHPS-IEQ2.2 & LABS-21 IEQ4.3	✓	✓
	ISO 14001 Plant Certification	✓	✓
	U.S. Green Building Council Member	✓	✓
	Canada Green Building Council Member	✓	✓
	Low Maintenance Option	✓	✓



Possibilities[®]
88052 pearl gray, 88094 blue moon,
88206 blue retreat, 88055 ash gray

ADHESIVES AND INSTALLATION

VINYL SHEET		
Adhesive	Item	Benefits
Premium	S-599	<ul style="list-style-type: none"> • Cost-effective adhesive option • Can be used for vinyl-, glass- or felt-backed sheet
High-Moisture	S-543	<ul style="list-style-type: none"> • High -moisture guarantee • Reduced need for moisture remediation • Can be used with LVT
High-Moisture	Flip® Adhesive Spray	<ul style="list-style-type: none"> • High-moisture guarantee • Warranted for heavy rolling loads • Simple one-step application process
Heavy Load	S-240	<ul style="list-style-type: none"> • Great for heavy load areas • Can be used on multiple substrates
Seams	S-761 Seam Adhesive	<ul style="list-style-type: none"> • Quick & easy seaming method • Can install in 15 minutes • No special tools • Excellent seam integrity
Flash Cove	S-580	<ul style="list-style-type: none"> • Pressure sensitive adhesive with unlimited working time

Products	Adhesives Depend on Substrate					Seams	Moisture Limits		pH Readings
	Wood	Concrete	Ceramic, Terrazzo, Marble	Metal	Existing Resilient Floor		MVER Calcium Chloride Test (lbs./1000 sq. ft./24 hrs.)	Relative Humidity In-Situ Probe	
SHEET									
Possibilities® Corlon®	S-543 High-Moisture, S-599 Full-Spread, S-240 in concentrated static and dynamic load areas, Flip® Spray Adhesive High-Moisture, Full-Spread or in concentrated static and dynamic load areas, S-580 in flash cove areas only					Recess scribe, heat weld or use S-761 Seam Adhesive. Heat weld only when S-240 or Flip® Spray Adhesive is used.	5 8 using S-240	93 when using Flip® 90 using S-543 & S-240 85 using S-599	5-11 for Flip® or S-543 5-9 for S-599, S-240 or S-580

MAINTENANCE

Products	Cleaners	Sealers	Polishes	Maintenance Options			
				Polish	Low Maintenance Options		
					No Polish Spray Buff	No Polish Dry Buff	No Polish No Buff
SHEET							
Possibilities® Corlon®	S-485	S-495	S-480	✓	✓	✓	Not recommended



Corlon®
88736 blue dream, 88730 ocean green
88729 blue yonder, 88732 yellow gold

DECORART™ POSSIBILITIES® | CORLON®

Heterogeneous Sheet

Materials and Construction

An inlaid sheet flooring consisting of an embossed wear layer of vinyl chips/granules consolidated on a flexible fibrous backing. Protected by a UV-cured polyurethane finish, the colors and pattern detail are dispersed uniformly throughout the wear layer of the product. Color pigments are insoluble in water and resistant to cleaning agents and light.

Size

6.0 ft. (1.83 m) wide, up to 82.5 ft. (25.0 m) in length

Gauge (nominal thickness)

0.080 in. (2.0 mm) overall

Wear Layer (nominal)

Possibilities: 0.040 in. (1.0 mm)

Corlon: 0.050 in. (1.27 mm)

Limitations

Possibilities and Corlon should not be used in the following areas:

- Heavy industrial and exterior areas.
- Commercial kitchens and commercial food processing areas.
- Where pointed spikes such as golf or track shoes will be used.
- Where the floor will be subjected to unusually concentrated static or dynamic loads.

NOTE: Concentrated static and dynamic loads such as hospital beds, roll-out bleachers, portable x-ray machines, etc., may visibly damage resilient as well as other types of floor coverings. **For questions regarding product suitability and detailed instructions for floor preparation and installation in these applications, please contact Armstrong.**

Suitable for Application Over

- Concrete, terrazzo, and other dry, structurally sound monolithic subfloors, which are suspended, on grade or below grade.
- Suspended wood subfloor construction with approved wood underlayments, and a minimum of 18 in. (45.7 cm) well-ventilated air space below.
- Most metal floors and most existing single-layer resilient floors on approved underlayments.
- Radiant-heated subfloors with a maximum surface temperature of 85° F (29° C).

Unsuitable for Application Over

- Subfloors where excessive moisture or alkali is present.
- Wood subfloors applied directly over concrete, or on sleeper-construction subfloors.
- Lightweight aggregate concrete subfloors having a density of less than 90 lbs. per cu. ft. (1442 kg/m³) or cellular concrete having a plastic (wet) density less than 100 lbs. per cu. ft. (1602 kg/m³) [94 lbs. per cu. ft. (1506 kg/m³) dry weight], or concrete having a compressive strength of less than 3500 psi (24 MPa). Concrete slabs with heavy static and/or dynamic loads should have higher design strengths and densities calculated to accommodate such loads.

Concrete curing agents, sealers, hardeners, or parting agents should be removed.

TECHNICAL DATA

Shipping Weight

Possibilities: 5.35 lbs./sq. yd. (2.90 kg/m²)

Corlon: 6.0 lbs./sq. yd. (3.3 kg/m²)

Gloss (typical value)

Possibilities: 60 degrees specular;

approximately 10-15

Corlon: 60 degrees specular;

approximately 5-15

International Specifications

Possibilities: ASTM F 1303, Type II, Grade 2, Class A backing

Corlon: ASTM F 1303, Type II, Grade 1, Class A backing

ISO 10582, Type II

Static Load Limit

500 lbs./sq. in. (35.16 kg/cm²) – ASTM F 970

NOTE: Floors should be protected from sharp-point loads and heavy static loads. High-heeled traffic [1000 psi (70.3 kg/cm²) or more] may visibly damage wood, resilient and other floor coverings.

Comparative Subjective Property Ratings

Durability – Very Good

Maintainability – Excellent

Resilience – Very Good

Subjective ratings (Excellent, Very Good, Good, Fair) are in relation to other Armstrong commercial resilient floors. Ratings are not directly related to any one test. They are broadly based on tests and experience of Armstrong Research and Development under varying conditions and circumstances. These ratings should not be used for comparison to ratings used by other manufacturers to rank their own products.

Fire Test Data

ASTM E 648 Flooring Radiant Panel Critical Radiant Flux –

0.45 watts/cm² or more – Class I

ASTM E 662 Smoke Chamber Specific Optical Smoke

Density – 450 or less

Numerical flammability ratings alone may not define the performance of the product under actual fire conditions. These ratings are provided only for use in the selection of products to meet the specified limits.

INSTALLATION

Job Conditions

Subfloors/underlayments shall be dry, clean and smooth. They shall be free from paint, varnish, solvents, wax, oil, existing adhesive residue, or other foreign matter.

For more detailed requirements of concrete, wood and metal subfloors, as well as wood and trowelable underlayments, refer to the Armstrong Guaranteed Installation Systems manual, F-5061 or to the installation instructions at armstrong.com.

Moisture testing must be performed on all concrete slabs regardless of their age or grade level, including areas where resilient flooring has already been installed. Moisture Vapor Emission Rate (MVER) using Calcium Chloride (ASTM F1869) and/or percent internal relative humidity (ASTM F 2170) tests must be conducted in strict accordance with the most current edition of the ASTM test method. Following are Armstrong's maximum allowable moisture limits:

- When using S-580 adhesive, moisture test results shall not exceed a MVER of 5.0 lbs./1000 sq. ft. / 24 hours per ASTM F 1869 and/or 80% RH per ASTM F 2170.
- When using S-240 adhesive, moisture test results shall not exceed a MVER of 8.0 lbs./1000 sq. ft. / 24 hours per ASTM F 1869 and/or 90% RH per ASTM F 2170.
- When using S-599 adhesive, moisture test results shall not exceed a MVER of 5.0 lbs./1000 sq. ft. / 24 hours per ASTM F 1869 and/or 85% RH per ASTM F 2170.
- When using S-543 adhesive, moisture test results shall not exceed a MVER of 5.0 lbs./1000 sq. ft. / 24 hours per ASTM F 1869 and/or 90% RH per ASTM F 2170.
- When using Flip® Spray Adhesive, moisture test results shall not exceed 93% RH per ASTM F 2170.

On installations where both the Moisture Vapor Emission Rate and percent internal relative humidity tests are conducted, results for both tests shall comply with the allowable limits listed above.

Before installation, concrete floors should also be tested for pH following procedures in ASTM D 710. When testing for pH, the allowable readings for the installation of Armstrong flooring are 5 to 9 when using S-240, S-580 and S-599, and 5 to 11 when using S-543 and Flip® Spray Adhesive.

Bond Tests should also be conducted for compatibility with the substrate.

Temperature shall be maintained at a minimum of 65° F (18° C) and a maximum of 100° F (38° C) for 48 hours prior to installation, during installation and for 48 hours after completion when using S-599 or S-543. When using S-240, the temperature shall be maintained at a minimum of 65° F (18° C) and a maximum of 85° F (29° C) for 48 hours prior to installation, during installation and for 48 hours after completion. A minimum temperature of 55° F (13° C) shall be maintained thereafter. Condition all flooring materials and adhesives to room temperature for at least 48 hours prior to starting installation. Protect all materials from the direct flow of heat from hot-air registers, radiators, or other heating fixtures and appliances.

Procedure

Possibilities and Corlon must be installed full spread using Armstrong S-599 Adhesive or S-543 High Moisture Adhesive with the option to use S-580 Adhesive in flash cove areas. Seams must be heat welded or sealed with Armstrong S-761 Seam Adhesive. In areas with heavy concentrated static or dynamic loads, it may be necessary to install with S-240 High Performance Epoxy Flooring Adhesive. Detailed instructions can be found in the [Armstrong Guaranteed Installation Systems manual, F-5061](#).

MAINTENANCE

Designed to be maintained by traditional resilient flooring maintenance methods. May be maintained by polishing, spray-buffing or dry buffing. The urethane protective finish can make initial maintenance easier, as well as reduce ongoing maintenance procedures.

Initial Maintenance Immediately After Installation

- Sweep or vacuum thoroughly.
- Damp mop with a diluted neutral detergent solution such as Armstrong S-485 Floor Cleaner – carefully wiping up black marks and excessive soil.
- Do not wet wash or scrub the floor for at least four to five days after installation.

Preparation for Commercial Use

For specific, ongoing maintenance procedures, see [Armstrong Commercial Resilient Flooring Maintenance Recommendations booklet, F-8663](#).

WARRANTIES

Armstrong warrants its regular (first quality) commercial resilient floors and wall base to be free from manufacturing defects for five years from the date of purchase. Armstrong also warrants the installation integrity of its commercial floor for five years from the date of purchase, if installed according to the [Armstrong Guaranteed Installation Systems manual, F-5061](#). See [Armstrong Commercial Floor Warranty, F-3349](#) or visit armstrong.com for warranty details, limitations and exclusions.



LEED eligible under Credit EQ4.3 for Indoor Air Quality.



ISO 9001



Quality Management System

ISO 14001



Environmental Management Standard



FP74408009-117

Printed in the United States of America.

© 2017 AFI Licensing LLC

Armstrong® and Armstrong Logo are trademarks of AWI Licensing LLC.

FloorScore® is a registered trademark of the Resilient Floor Covering Institute.

LEED® is a registered trademark of the United States Green Building Council.

All other marks are trademarks of Armstrong Flooring, Inc., or its subsidiaries

Colors pictured in this product brochure are as accurate as possible but may not be identical to the actual product due to the printing process. For true color representation, order product samples before specifying.