



**American Made LVT.  
Shipped Fast.**



**QUICK SHIP**

# YOUR TIMELINE IS OUR TIMELINE



- ✓ Made in the USA – no overseas lead-time or tariffs
- ✓ 50 LVT designs in three structures and a variety of sizes
- ✓ 2 adhesive options available to complete your project
- ✓ Orders up to 2,500 square feet ship within 5 business days
- ✓ Orders between 2,501 – 20,000 square feet ship within 10 business days

*For more information, visit [armstrongflooring.com/quickship](http://armstrongflooring.com/quickship) or contact your sales representative.  
Products made with domestic and global content.*

# Get up to 20,000 square feet shipped within 10 business days.

## Select the product that's right for your performance and budget requirements.

	Natural Creations® with Diamond 10® Technology	Parallel® USA 20	Parallel® USA 12
	<i>Offers superior performance and durability compared to competitive LVT products</i>	<i>An economical option for areas where commercial performance is required</i>	<i>Ideal for light commercial spaces &amp; residential areas in mixed use properties</i>
Gauge (Thickness)	3.2 mm	2.5 mm	2.0 mm
Wear Layer	20 mil	20 mil	12 mil
Coating	Diamond 10® Technology	Urethane Plus	Urethane Plus
Warranty	20-Year Limited Commercial	15-Year Limited Commercial	7-Year Limited Commercial

## LUXURY FLOORING

# Natural Creations®

with Diamond 10® Technology



The unique structure of Natural Creations® combined with Diamond 10® Technology results in superior performance and durability compared to competitive LVT products.

Diamond 10® Technology is a revolutionary, innovation that uses cultured diamonds — with all the properties of real diamonds — to provide the ultimate in scratch, stain, and scuff resistance for low-maintenance floors that look newer longer.

## Limited Warranty

NATURAL CREATIONS®

# 20 YEAR

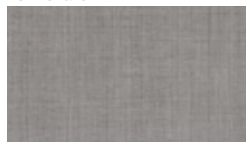
Commercial Warranty when installed in strict accordance with the recommended Armstrong® Flooring adhesive and detailed instructions at [ArmstrongFlooring.com](http://ArmstrongFlooring.com).

# +10 ADDITIONAL YEARS

of overall warranty coverage by using any Strong System™ subfloor preparation product.

## Mystix®

NA910  
Kenzie raven



18 in. x 18 in.

NA933  
Spettro Nile night



6 in. x 36 in.

## EarthCuts®

NA340  
Delano shell



12 in. x 24 in.

NA330  
Braco plaster



12 in. x 24 in.

NA331  
Braco mortar



12 in. x 24 in.

## ArborArt®

NA193  
Avila Oak vienna smoke



4 in. x 36 in.

NA190  
Avila Oak moroccan sand



4 in. x 36 in.

NA180  
Galena Oak rye



6 in. x 48 in.

NA225  
Tustin Navale saddle rust



6 in. x 36 in.

NA120  
Coastal Crafted maritime



9 in. x 48 in.

NA143  
City Mill sunbeam



9 in. x 48 in.

NA121  
Coastal Crafted boardwalk



9 in. x 48 in.



Natural Creations® Earthcuts® - NA330 Braco plaster; NA331 Braco mortar



**MADE IN THE USA**  
with global and domestic  
content, for quick availability

Recycling  
Program

GREENGLASS  
GCC Global Services

LUXURY FLOORING

Parallel® USA 20 | Parallel® USA 12

Parallel® USA offers a balance of performance, design, and price. All designs are available in two structures and feature Urethane Plus coating for enhanced resistance to scratches, stains, and scuffs compared to standard urethane coatings.

Parallel® USA 20 is ideally suited for areas where commercial flooring performance is a requirement. Parallel® USA 12 can be used in light commercial spaces, Main Street businesses, and residential areas in mixed use properties.

Limited Warranty

Parallel® USA 20

15 YEAR

Parallel® USA 12

7 YEAR

Commercial Warranty when installed in strict accordance with the recommended Armstrong® Flooring adhesive and detailed instructions at [ArmstrongFlooring.com](http://ArmstrongFlooring.com).

+10 ADDITIONAL YEARS  
of overall warranty coverage by using any Strong System™ subfloor preparation product.

J5251 | J5151  
Jace pier beige



18 in. x 18 in.

J5261 | J5161  
Havana biscuit beige



18 in. x 18 in.

J5260 | J5160  
Havana toast



18 in. x 18 in.

J5263 | J5163  
Havana henna



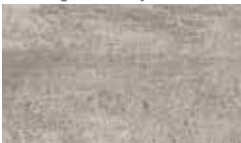
18 in. x 18 in.

J5250 | J5150  
Jace silver gray



18 in. x 18 in.

J5235 | J5135  
Flint Ridge storm sky



6 in. x 48 in.

J5255 | J5155  
Brushed Essence enchanted



6 in. x 48 in.

J5216 | J5116  
Glendale Oak silver fox



6 in. x 48 in.

J5262 | J5162  
Havana heather



18 in. x 18 in.

J5252 | J5152  
Jace ebony gray



18 in. x 18 in.

J5215 | J5115  
Glendale Oak scotch mist



6 in. x 48 in.

J5203 | J5103  
Glen Brook Oak drift sand



6 in. x 48 in.

J5220 | J5120  
Cornelius Creek sage brown



6 in. x 48 in.

J5217 | J5117  
Glendale Oak forest gray



6 in. x 48 in.

J5202 | J5102  
Glen Brook Oak evening shadow



6 in. x 48 in.

J5225 | J5125  
Cottonwood Springs sunset blonde



6 in. x 48 in.

J5240 | J5140  
Long Beach Oak golden sand



6 in. x 48 in.

J5210 | J5110  
Hightop Hickory caramel cove



6 in. x 48 in.

J5245 | J5145  
Savannah Walnut endearing



6 in. x 48 in.

Parallel USA 20  
J52XX

Parallel USA 12  
J51XX





Parallel® USA 20 | 12 - J5216 | J5116 Glendale Oak silver fox



Recycling Program



SEAL OF APPROVAL  
ICC Global Services



**MADE IN THE USA**  
with global and domestic  
content, for quick availability



Adhesives

Two of our most popular LVT adhesives are included in the Quick Ship program to complete your project. Both are suitable for use in high moisture conditions and are designed to withstand the demands of commercial applications.

	S-315 Roll Strong™	S-288 Flooring Adhesive
Size	1 gallon or 4 gallons	4 gallons
Spread Rate	350-400 square feet per gallon	250-300 square feet per gallon
Open Time	15 or more minutes	10-20 minutes
Working Time	Up to 4 hours	Up to 1 hour
Application Method	Rolled on using a 3/8" nap roller	Trowel
RH Limit	≤ 95%	≤ 95%
pH	5-11	5-9
VOC Content	0 g/L; calculated and reported, SCAQMD 1168	< 14 g/L; calculated and reported, SCAQMD 1168

For a full list of Armstrong Flooring adhesives that are compatible with the products in our Quick Ship program, please reference our LVT installation instructions.

